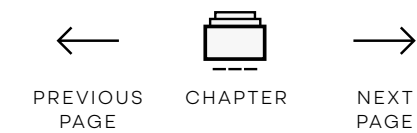


OLYMP

Corporate Fashion
NOS / 06
Never Out Of Stock



OLYMP



NOS / 06

POLOS · T-SHIRTS

LUXOR COMFORT FIT

LUXOR MODERN FIT

LEVEL FIVE

NO. SIX

TENDENZ

**LUCKY BLUSEN /
BLOUSES**

**FEUERWEHR /
FIRE BRIGADE PILOT**

ACCESSORIES

INFO · CONTACT



Corporate Fashion

NOS / 06

Never Out Of Stock

OLYMP Corporate Fashion – NOS-Programm No. 6

OLYMP steht für kompromisslose Qualität bei Materialien und Verarbeitung, hervorragende Trage- und Pflegevorteile, ein optimales Preis-Leistungs-Verhältnis, eine überzeugende modische Aussage und verantwortungsvolles Handeln.

Als langjähriger Lieferant von Dienst- und Uniformhemden sowie -blusen für diverse Bundesländer, Feuerwehren, Fluggesellschaften, Firmenkunden und Behörden hat sich die Marke OLYMP als verlässlicher Anbieter zeitgemäßer, hochwertiger und haltbarer Corporate Fashion einen internationalen Namen gemacht.

Unser Produktangebot umfasst diverse Hemden- und Blusenlinien in unterschiedlichen Schnittvarianten, zahlreichen Farben, diversen Kragenformen, Ärmellängen und Sondergrößen. Hinzu kommen Polo- und T-Shirts sowie Krawatten als Accessoire.

Neu:

- Unter anderem unsere Auswahl an Poloshirts in optimierter Passform, acht Farbstellungen und zwei Materialausführungen – als schnell trocknendes Active Dry (57 % Baumwolle, 43 % Polyester) und als Piqué (96 % Baumwolle, 4 % Elasthan), bei welchem wir unser Größenangebot in vier Farben bis Größe 4XL bei Damen und 6XL bei Herren erweitern konnten.
- Neu im Sortiment sind Hemden und Blusen aus Twill in Weiß und Hellblau als blickdichte Variante
- Erweiterung des Sortiments um Lucky Hemden und Blusen (Hemden/Blusen mit Besatz)
- Unsere Pilotenhemden haben wir um eine zusätzliche Schnittform erweitert: body fit in Größe 36–42.
- Nicht zuletzt überzeugt das neue Programm sortimentsübergreifend durch mehr Durchgängigkeit bei allen Artikeln in den verschiedenen Schnittformen.

Unsere Haltung. Unser Statement.

Als global agierendes Familienunternehmen übernimmt OLYMP auch global Verantwortung für Mensch, Umwelt, Klima und Gesellschaft. Das Nachhaltigkeitsprogramm von OLYMP beruht auf drei starken Säulen und hat dabei die gesamte Geschäftstätigkeit im Blick: vom zunehmenden Einsatz nachhaltigerer Rohstoffe über die Umsetzung von Sozial- und Umweltstandards entlang der Lieferkette bis hin zum aktiven Klimaschutz am Firmensitz. Dafür engagieren wir uns aktiv in zahlreichen Initiativen, Verbänden und Organisationen, die sich für eine nachhaltigere Textilwirtschaft einsetzen. Detaillierte Informationen hierzu finden Sie in der beiliegenden Broschüre.

OLYMP Corporate Fashion - NOS Programme No. 6

OLYMP represents uncompromising quality with regard to materials and finishing, outstanding wear and care advantages, optimum value for money, a winning fashion statement and responsible behaviour.

As a long-standing supplier of service and uniform shirts and blouses for various federal states, fire departments, airlines, corporate clients and authorities, the OLYMP brand has made an international name for itself as a reliable supplier of contemporary, high quality and durable corporate fashion.

Our product range includes a variety of shirt and blouse lines in different cuts, numerous colours, various collar styles, arm lengths and special sizes. We also have polo shirts and T-shirts and ties as accessories.

New:

- Our selection of polo shirts in an optimised fit, eight colour combinations and two different fabrics – as a fast-drying Active Dry (57% cotton, 43% polyester) and as a piqué (96% cotton, 4% elastane). In four colours, we have extended our size range to 4XL for women and 6XL for men.
- New to the range are twill shirts and blouses in white and light blue as an opaque option.
- Expansion of the range to include Lucky shirts and blouses (shirts/blouses with a trim)
- We have extended our range of pilot's shirts to include an additional cut: body fit in size 36-42.
- Last but not least, the new range impresses across all product lines with more consistency for all items in the various cuts.

Our Stance. Our Statement.

As a family business active all over the world, OLYMP also assumes a global responsibility for people, the environment, climate and society. OLYMP's sustainability programme is based on three strong pillars and focuses on its entire range of business activities: from the increasing use of more sustainable raw materials to implementation of social and environmental standards along the supply chain to active climate protection at its headquarters. This is why we are actively involved in many initiatives, associations and organisations that support a sustainable textile industry. For detailed information, please refer to the enclosed brochure.

OLYMP



NOS / 06

POLOS · T-SHIRTS

LUXOR COMFORT FIT

LUXOR MODERN FIT

LEVEL FIVE

NO. SIX

TENDENZ

LUCKY BLUSEN /
BLOUSES

FEUERWEHR /
FIRE BRIGADE PILOT

ACCESSORIES

INFO · CONTACT



OLYMP

Polos · T-Shirts

OLYMP



NOS / 06

POLOS · T-SHIRTS

LUXOR COMFORT FIT

LUXOR MODERN FIT

LEVEL FIVE

NO. SIX

TENDENZ

**LUCKY BLUSEN /
BLOUSES**

**FEUERWEHR /
FIRE BRIGADE PILOT**

ACCESSORIES

INFO · CONTACT



SEARCH
DOCUMENT



WRITE US
AN EMAIL



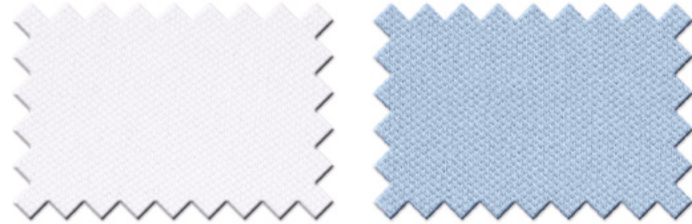
OLYMP

Polos · Modern Fit · Herren / Men

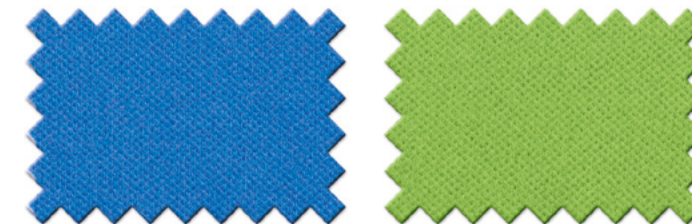
Art. **0862** Grössen / Sizes **XS - 4XL**

Polo Piqué Halbarm / Short sleeve **1/2**

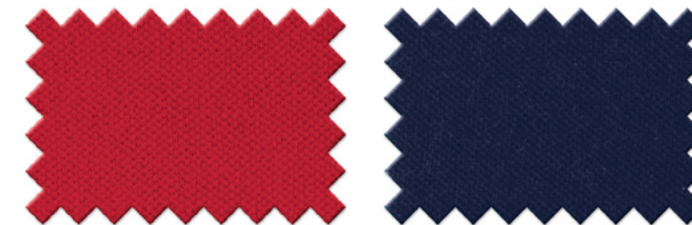
96 % Baumwolle / 4 % Elasthan
96 % cotton / 4 % elastane



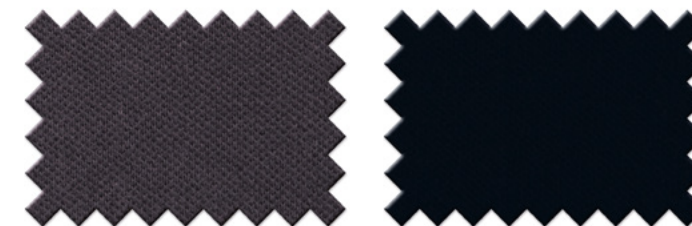
J 086212 00 **bis 6XL** J 086212 11



J 086212 19 J 086212 40



J 086212 35 J 086212 18 **bis 6XL**



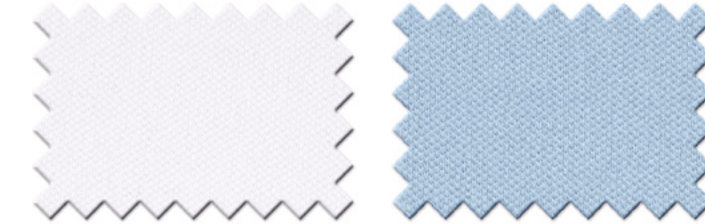
J 086212 67 **bis 6XL** J 086212 68 **bis 6XL**

Polos · Modern Fit · **Damen / Ladies**

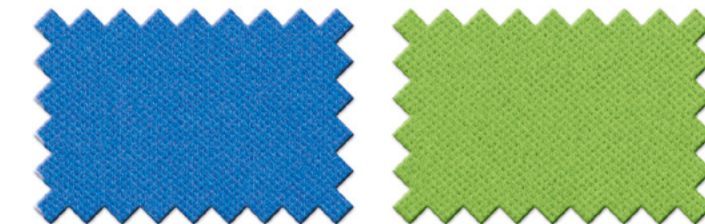
Art. **0871** Grössen / Sizes **XS - 3XL**

Polo Piqué Halbarm / Short sleeve **1/2**

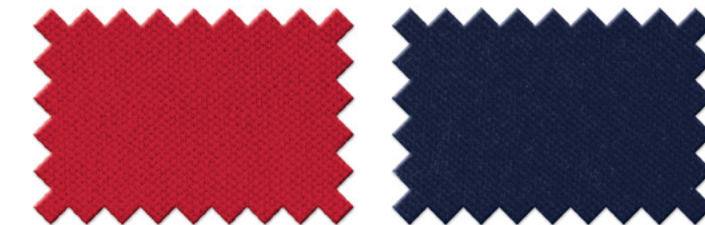
96 % Baumwolle / 4 % Elasthan
96 % cotton / 4 % elastane



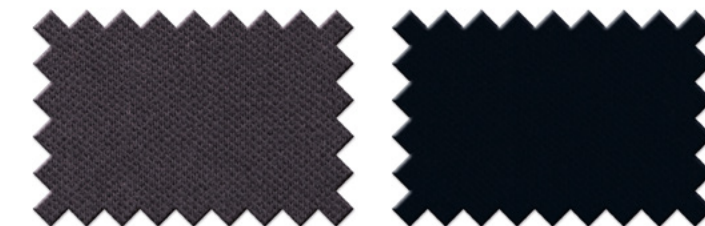
J 087112 00 **bis 4XL** J 087112 11



J 087112 19 J 087112 40



J 087112 35 J 087112 18 **bis 4XL**



J 087112 67 **bis 4XL** J 087112 68 **bis 4XL**

OLYMP



NOS / 06

POLOS · T-SHIRTS

LUXOR COMFORT FIT

LUXOR MODERN FIT

LEVEL FIVE

NO. SIX

TENDENZ

**LUCKY BLUSEN /
BLOUSES**

**FEUERWEHR /
FIRE BRIGADE PILOT**

ACCESSORIES

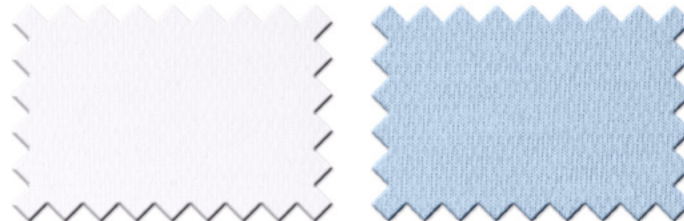
INFO · CONTACT



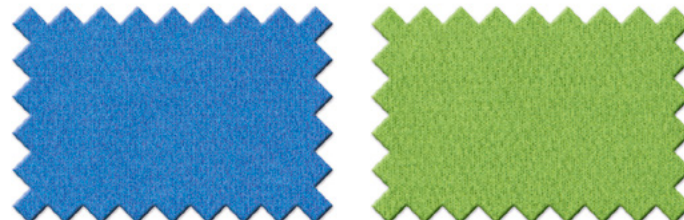
Art. **0864** Grössen / Sizes **XS - 4XL**

Polo Active Dry Halbarm / Short sleeve **1/2**

57 % Baumwolle / 43 % Polyester
57 % cotton / 43 % polyester



G 086412 00 G 086412 11



G 086412 19 G 086412 40



G 086412 35 G 086412 18

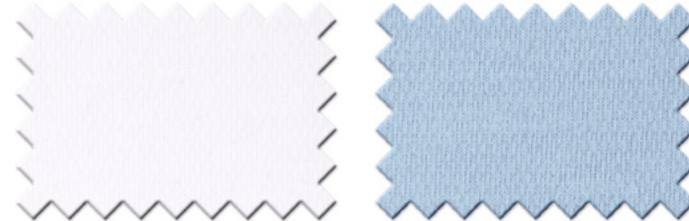


G 086412 67 G 086412 68

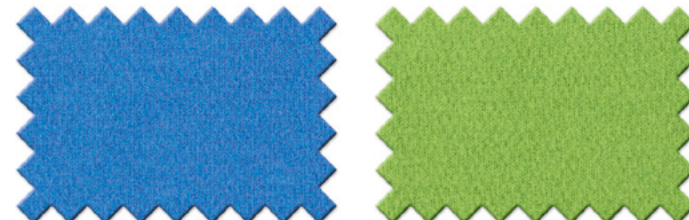
Art. **0872** Grössen / Sizes **XS - 3XL**

Polo Active Dry Halbarm / Short sleeve **1/2**

57 % Baumwolle / 43 % Polyester
57 % cotton / 43 % polyester



G 087212 00 G 087212 11



G 087212 19 G 087212 40



G 087212 35 G 087212 18



G 087212 67 G 087212 68

Art. **0801** Grössen / Sizes **XS - 4XL**

T-Shirt V-Neck · Single Pack Halbarm / Short sleeve **1/2**

94 % Baumwolle / 6 % Elasthan
94 % Cotton / 6 % Elastane



B 080112 24



NOS / 06

POLOS · T-SHIRTS

LUXOR COMFORT FIT

LUXOR MODERN FIT

LEVEL FIVE

NO. SIX

TENDENZ

LUCKY BLUSEN / BLOUSES

FEUERWEHR / FIRE BRIGADE PILOT

ACCESSORIES

INFO · CONTACT

OLYMP

LUXOR

Comfort Fit

OLYMP



NOS / 06

POLOS · T-SHIRTS

LUXOR COMFORT FIT

LUXOR MODERN FIT

LEVEL FIVE

NO. SIX

TENDENZ

**LUCKY BLUSEN /
BLOUSES**

**FEUERWEHR /
FIRE BRIGADE PILOT**

ACCESSORIES

INFO · CONTACT



SEARCH
DOCUMENT



WRITE US
AN EMAIL

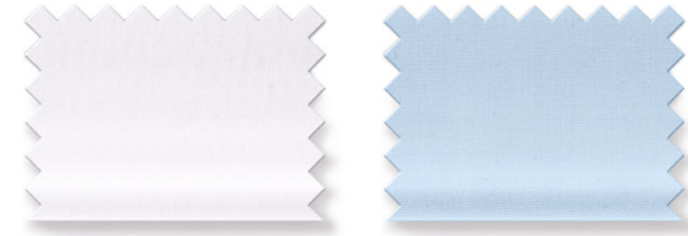


OLYMP

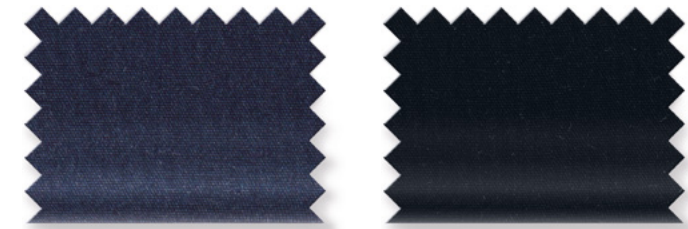
LUXOR · Comfort Fit · Hemden / Shirts

Art. **0254 / 0251** Grössen / Sizes **40 - 50**

Uni Halbarm / Short sleeve **1/2**



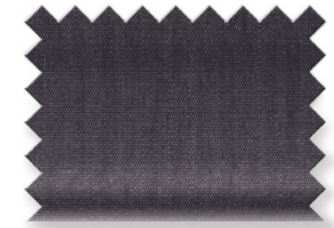
L 025412 00 New Kent L 025412 15 New Kent
L 025112 00 Button-down



L 025412 18 New Kent L 025412 68 New Kent

Art. **5131** Grössen / Sizes **40 - 50**

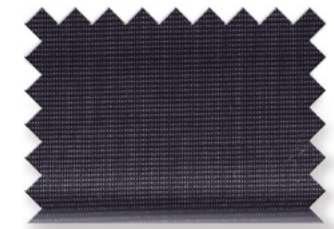
Chambray Halbarm / Short sleeve **1/2**



L 513112 67 New Kent

Art. **0255** Grössen / Sizes **40 - 50**

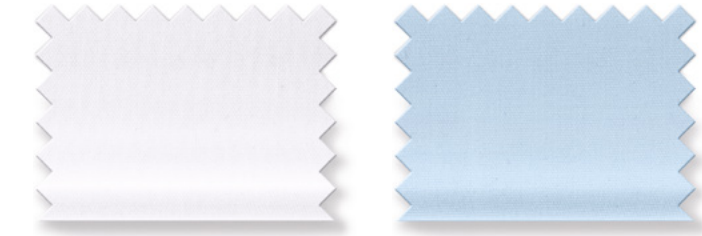
Fil à Fil Halbarm / Short sleeve **1/2**



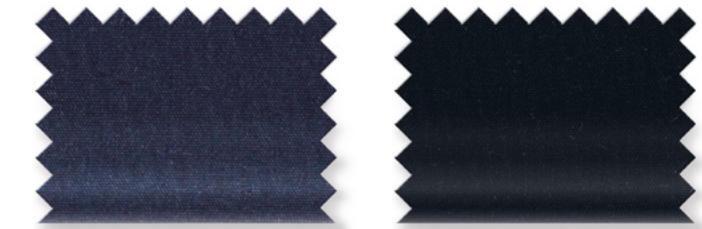
L 025512 68 New Kent

Art. **0254/ 0251** Grössen / Sizes **40 - 50**

Uni Langarm / Long sleeve **1/1**



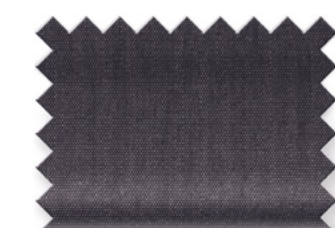
M 025464 00 New Kent M 025464 15 New Kent
M 025164 00 Button-down



M 025464 18 New Kent M 025464 68 New Kent

Art. **5131** Grössen / Sizes **40 - 50**

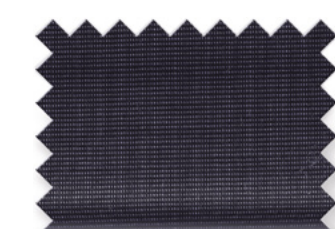
Chambray Langarm / Long sleeve **1/1**



M 513164 67 New Kent

Art. **0255** Grössen / Sizes **40 - 50**

Fil à Fil Langarm / Long sleeve **1/1**



M 025564 68 New Kent

- 100 % Baumwolle
100 % Cotton
- Bügelfrei
Non-iron
- Atmungsaktiv
Breathable
- Knitterfrei
Wrinkle-free
- Italienische Knopfleiste
Italian button panel
- Verstellbare Manschetten mit Kombi-Funktion
Adjustable cuffs with combi function

Hautsympathisch Kind to the skin
Klassisch bequeme Passform Classic comfortable fit
Oeko-Tex® Standard 100 Nr. 95.0.3008

OLYMP



NOS / 06

POLOS · T-SHIRTS

LUXOR COMFORT FIT

LUXOR MODERN FIT

LEVEL FIVE

NO. SIX

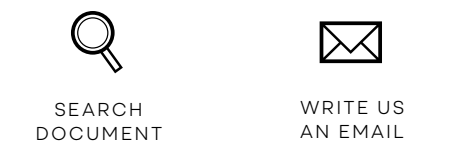
TENDENZ

LUCKY BLUSEN / BLOUSES

FEUERWEHR / FIRE BRIGADE PILOT

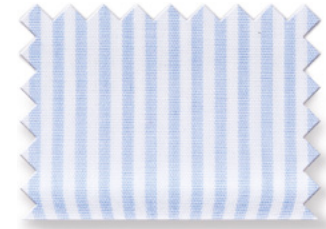
ACCESSORIES

INFO · CONTACT



Art. **0280** Grössen / Sizes **40 - 48**

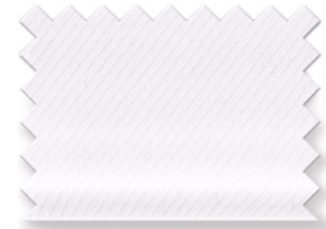
Zündholzstreifen / Fine stripe Langarm / Long sleeve **1/1**



M 028064 11 New Kent

Art. **0725** Grössen / Sizes **40 - 50**

Twill Langarm / Long sleeve **1/1**



R 072564 00 New Kent

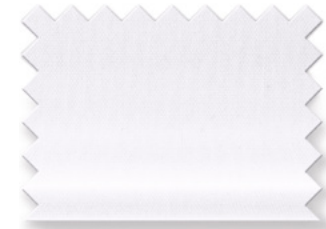


R 072564 11 New Kent

Art. **0261** Grössen / Sizes **40 - 50**

Uni Langarm / Long sleeve **1/1**

Ohne Brusttasche / Without chest pocket



M 026164 00 New Kent



M 026164 15 New Kent



M 026164 18 New Kent

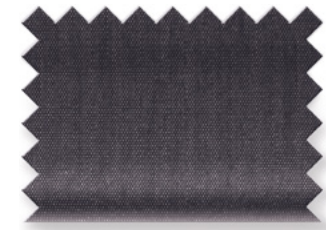


M 026164 68 New Kent

Art. **0262** Grössen / Sizes **40 - 50**

Chambray Langarm / Long sleeve **1/1**

Ohne Brusttasche / Without chest pocket

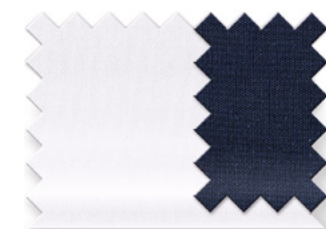


M 026264 67 New Kent

Art. **0437** Grössen / Sizes **40 - 50**

Langarm / Long sleeve **1/1**

Ohne Brusttasche / Without chest pocket



R 043764 00 Global Kent



Kragen / Collar

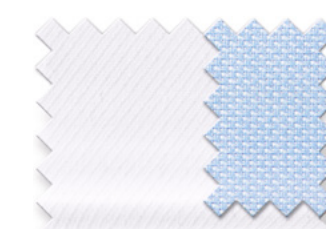


Manschette / Cuff

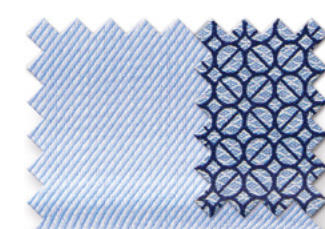
Art. **0266 / 0263** Grössen / Sizes **40 - 50**

Langarm / Long sleeve **1/1**

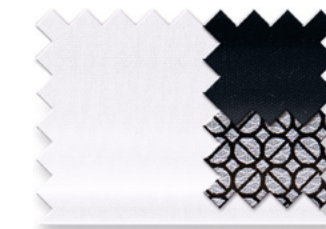
Ohne Brusttasche / Without chest pocket



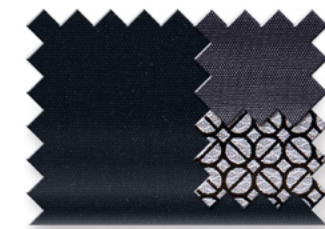
R 026664 00 Global Kent



R 026664 11 Global Kent



R 026364 00 Global Kent



R 026364 68 Global Kent



Kragen / Collar



Manschette / Cuff

NOS / 06

POLOS · T-SHIRTS

LUXOR COMFORT FIT

LUXOR MODERN FIT

LEVEL FIVE

NO. SIX

TENDENZ

LUCKY BLUSEN / BLOUSES

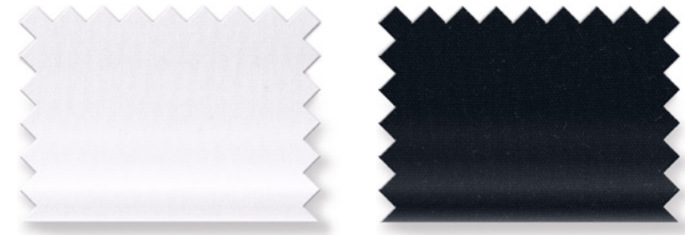
FEUERWEHR / FIRE BRIGADE PILOT

ACCESSORIES

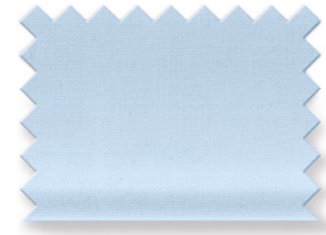
INFO · CONTACT

Art. **0254** Grössen / Sizes **52 + 54**

Uni Halbarm / Short sleeve **1/2**



L 025412 00 New Kent L 025412 68 New Kent



L 025412 15 New Kent

Art. **0437** Grössen / Sizes **52 + 54**

Langarm / Long sleeve **1/1**

Ohne Brusttasche / Without chest pocket



R 043764 00 Global Kent



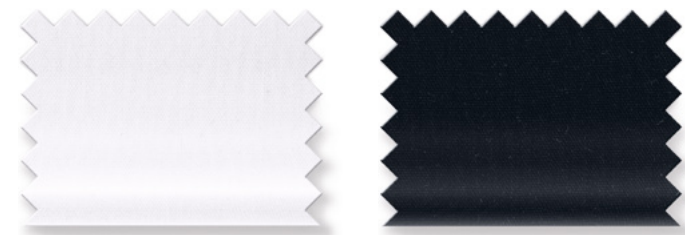
Kragen / Collar



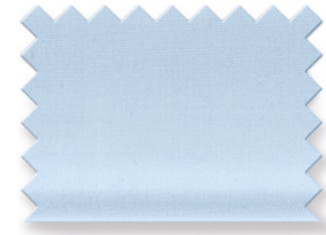
Manschette / Cuff

Art. **0254** Grössen / Sizes **52 + 54**

Uni Langarm / Long sleeve **1/1**



M 025464 00 New Kent M 025464 68 New Kent



M 025464 15 New Kent

Art. **0725** Grössen / Sizes **52 + 54**

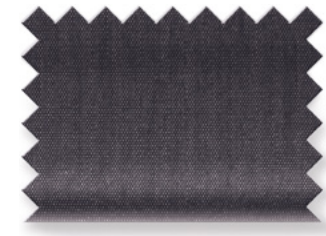
Twill Langarm / Long sleeve **1/1**



R 072564 00 New Kent

Art. **5131** Grössen / Sizes **52 + 54**

Chambray Langarm / Long sleeve **1/1**



M 513164 67 New Kent

Art. **0254** Grössen / Sizes **40 - 48**

Uni **Extra kurzer Arm / Extra short sleeve** **58**



M 025458 00 New Kent

Art. **0254** Grössen / Sizes **40 - 48**

Uni **Extra langer Arm / Extra long sleeve** **69**



M 025469 00 New Kent

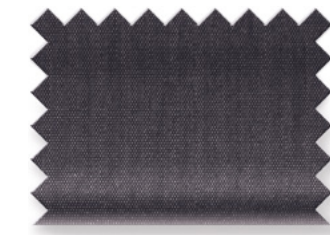
M 025469 15 New Kent



M 025469 68 New Kent

Art. **5131** Grössen / Sizes **40 - 48**

Chambray **Extra langer Arm / Extra long sleeve** **69**



M 513169 67 New Kent

Art. **0437** Grössen / Sizes **40 - 48**

Extra langer Arm / Extra long sleeve **69**

Ohne Brusttasche / Without chest pocket



R 043769 00 Global Kent



Kragen / Collar



Manschette / Cuff

NOS / 06

POLOS · T-SHIRTS

LUXOR COMFORT FIT

LUXOR MODERN FIT

LEVEL FIVE

NO. SIX

TENDENZ

LUCKY BLUSEN / BLOUSES

FEUERWEHR / FIRE BRIGADE PILOT

ACCESSORIES

INFO · CONTACT



OLYMP

LUXOR · Comfort Fit · **Blusen / Blouses**

Art. **0642** Grössen / Sizes **32 - 54**

Uni Halbarm / Short sleeve **1/2**



L 064212 00 Karla

Art. **0622** Grössen / Sizes **32 - 54**

Verdeckte Knopfleiste / Covered button panel Langarm / Long sleeve **1/1**



M 062261 00 Susa



Kragen / Collar



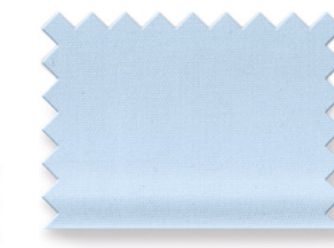
Manschette / Cuff

Art. **0642** Grössen / Sizes **32 - 5**

Uni Langarm / Long sleeve **1/1**



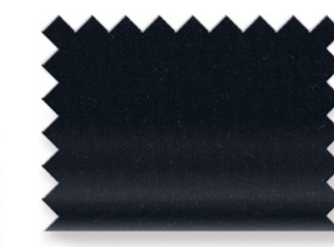
M 064261 00 Karla



M 064261 15 Karla



M 064261 18 Karla



M 064261 68 Karla

Art. **0646** Grössen / Sizes **32 - 54**

Twill Langarm / Long sleeve **1/1**



R 064661 00 Karla

- 100 % Baumwolle
100 % Cotton
- Bügelfrei
Non-iron
- Atmungsaktiv
Breathable
- Knitterfrei
Wrinkle-free
- Offene Kragenform
Open collar design
- Oeko-Tex® Standard 100
Nr. 95.0.3008

Legere, nicht einengende, bequeme, leicht taillierte Passform
Relaxed, comfortable, with freedom of movement and a slightly tailored fit

OLYMP



NOS / 06

POLOS · T-SHIRTS

LUXOR COMFORT FIT

LUXOR MODERN FIT

LEVEL FIVE

NO. SIX

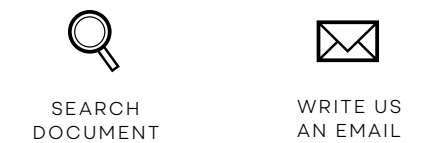
TENDENZ

**LUCKY BLUSEN /
BLOUSES**

**FEUERWEHR /
FIRE BRIGADE PILOT**

ACCESSORIES

INFO · CONTACT



OLYMP

LUXOR

Modern Fit

OLYMP

← PREVIOUS PAGE



CHAPTER



NEXT PAGE

NOS / 06

POLOS · T-SHIRTS

LUXOR COMFORT FIT

LUXOR MODERN FIT

LEVEL FIVE

NO. SIX

TENDENZ

**LUCKY BLUSEN /
BLOUSES**

**FEUERWEHR /
FIRE BRIGADE PILOT**

ACCESSORIES

INFO · CONTACT



SEARCH
DOCUMENT



WRITE US
AN EMAIL

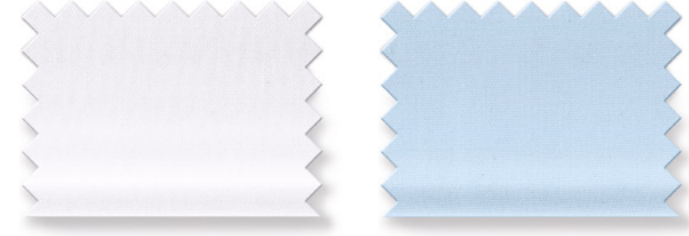


OLYMP

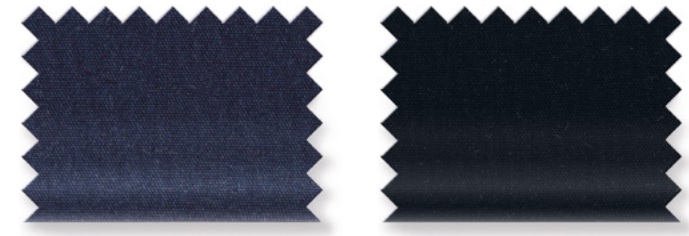
LUXOR · Modern Fit · Hemden / Shirts

Art. **0300 / 0303** Grössen / Sizes **37 - 4**

Uni Halbarm / Short sleeve **1/2**



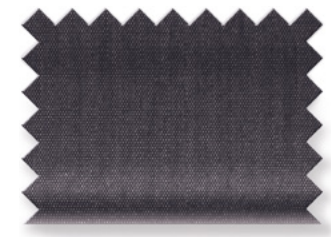
L 030012 00 New Kent L 030312 00 Button-down
L 030012 15 New Kent



L 030012 18 New Kent L 030012 68 New Kent

Art. **0304** Grössen / Sizes **37 - 48**

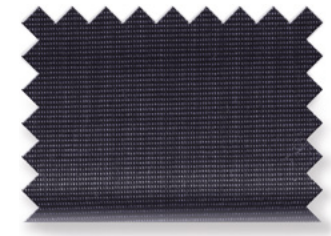
Chambray Halbarm / Short sleeve **1/2**



L 030412 67 New Kent

Art. **0302** Grössen / Sizes **37 - 48**

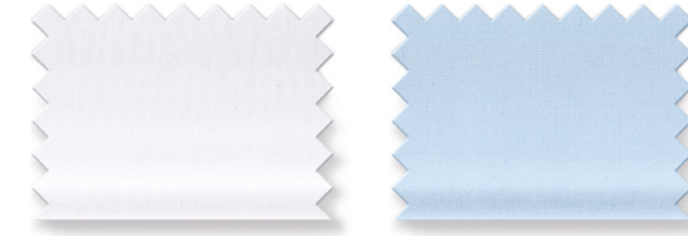
Fil à Fil Halbarm / Short sleeve **1/2**



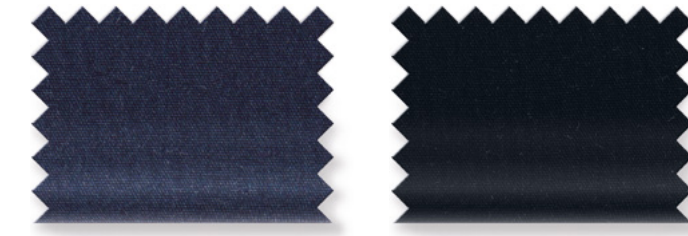
L 030212 68 New Kent

Art. **0300 / 0303** Grössen / Size **37 - 48**

Uni Langarm / Long sleeve **1/1**



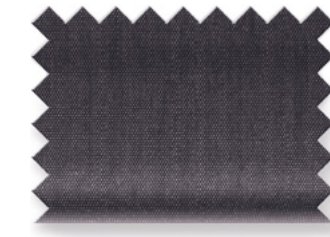
M 03006400 New Kent M 030364 00 Button-down
M 03006415 New Kent



M 03006418 New Kent M 03006468 New Kent

Art. **0304** Grössen / Sizes **37 - 4**

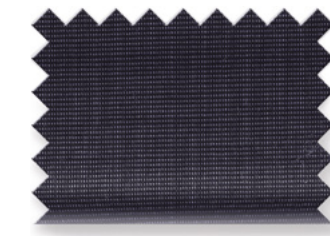
Chambray Langarm / Long sleeve **1/1**







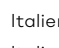

M 030464 67 New Kent

Art. **0302** Grössen / Sizes **37 - 48**

Fil à Fil Langarm / Long sleeve **1/1**



M 030264 68 New Kent

-  100 % Baumwolle / 100 % Cotton
-  Bügelfrei / Non-iron
-  Atmungsaktiv / Breathable
-  Knitterfrei / Wrinkle-free
-  Italienische Knopfleiste / Italian button panel
-  Verstellbare Manschetten mit Kombi-Funktion / Adjustable cuffs with combi function

Hautsympathisch / Kind to the skin Zeitgemäß, modisch taillierte Passform / Fashionably contemporary cut Oeko-Tex® Standard 100 Nr. 95.0.3008

OLYMP



NOS / 06

POLOS · T-SHIRTS

LUXOR COMFORT FIT

LUXOR MODERN FIT

LEVEL FIVE

NO. SIX

TENDENZ

LUCKY BLUSEN / BLOUSES

FEUERWEHR / FIRE BRIGADE PILOT

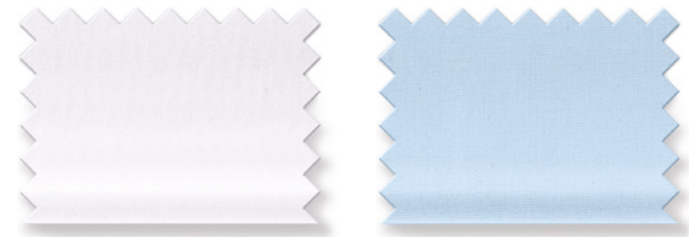
ACCESSORIES

INFO · CONTACT

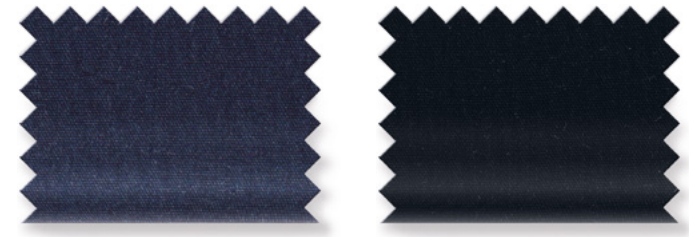


Art. **6350** Grössen / Sizes **37 - 48**

Uni Langarm / Long sleeve **1/1**
 Ohne Brusttasche / Without chest pocket
 Kragen kantig gesteppt / Edge topstitching on collar



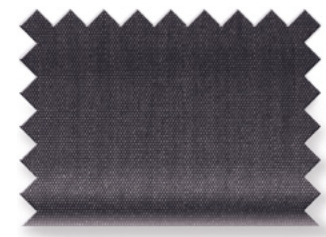
M 635064 00 New York Kent M 635064 15 New York Kent



M 635064 18 New York Kent M 635064 68 New York Kent

Art. **6354** Grössen / Sizes **37 - 48**

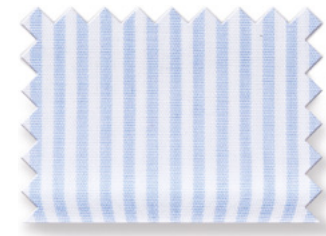
Chambray Langarm / Long sleeve **1/1**
 Ohne Brusttasche / Without chest pocket
 Kragen kantig gesteppt / Edge topstitching on collar



M 635464 67 New York Kent

Art. **0314** Grössen / Sizes **37 - 48**

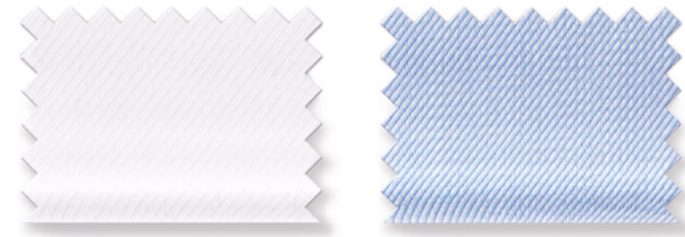
Zündholzstreifen / Fine stripe Langarm / Long sleeve **1/1**



M 031464 11 New Kent

Art. **0745** Grössen / Sizes **37 - 48**

Twill Langarm / Long sleeve **1/1**



R 074564 00 Global Kent R 074564 11 Global Kent

Art. **0447** Grössen / Sizes **37 - 48**

Langarm / Long sleeve **1/1**
 Ohne Brusttasche / Without chest pocket



R 044764 00 Global Kent



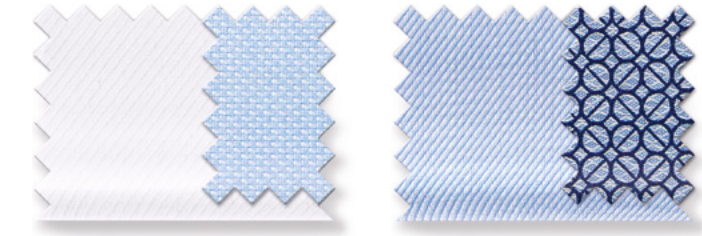
Kragen / Collar



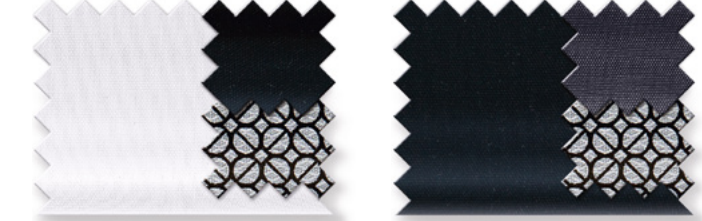
Manschette / Cuff

Art. **0366 / 0363** Grössen / Sizes **37 - 48**

Langarm / Long sleeve **1/1**
 Ohne Brusttasche / Without chest pocket



R 036664 00 Global Kent R 036664 11 Global Kent



R 036364 00 Global Kent R 036364 68 Global Kent



Kragen / Collar

Manschette / Cuff

NOS / 06

POLOS · T-SHIRTS

LUXOR COMFORT FIT

LUXOR MODERN FIT

LEVEL FIVE

NO. SIX

TENDENZ

LUCKY BLUSEN / BLOUSES

FEUERWEHR / FIRE BRIGADE PILOT

ACCESSORIES

INFO · CONTACT



SEARCH DOCUMENT



WRITE US AN EMAIL



100 % Baumwolle
100 % Cotton



Bügelfrei
Non-iron



Atmungsaktiv
Breathable



Knitterfrei
Wrinkle-free

Italienische Knopfleiste
Italian button panel

Verstellbare Manschetten mit Kombi-Funktion
Adjustable cuffs with combi function

Hautsympathisch
Kind to the skin

Zeitgemäß, modisch taillierte Passform
Fashionably contemporary cut

Oeko-Tex® Standard 100
Nr. 95.0.3008

Art. **0300** Grössen / Sizes **37 - 48**

Uni **Extra kurzer Arm / Extra short sleeve 58**

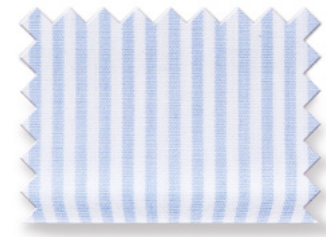


M 03005800 New Kent

Art. **0314** Grössen / Sizes **37 - 48**

Extra langer Arm / Extra long sleeve 69

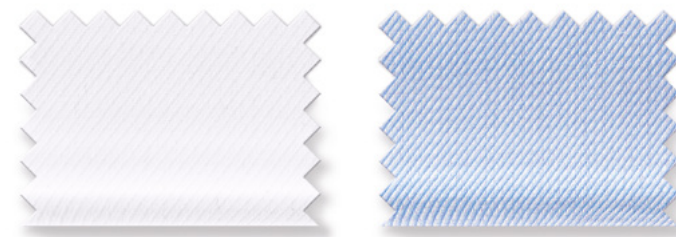
Zündholzstreifen / Fine stripe



M 031469 11 New Kent

Art. **0745** Grössen / Sizes **37 - 48**

Twill **Extra langer Arm / Extra long sleeve 69**

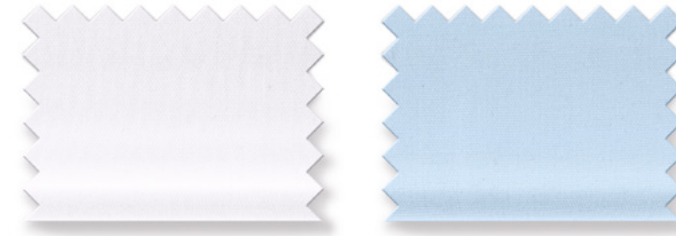


R 074569 00Global Kent

R 074569 11Global Kent

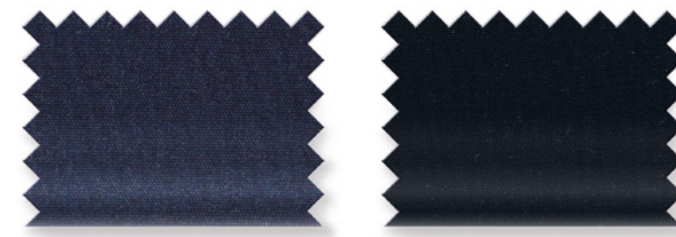
Art. **0300** Grössen / Sizes **37 - 48**

Uni **Extra langer Arm / Extra long sleeve 69/72**



M 03006900 New Kent
M 030072 00 New Kent

M 03006915 New Kent

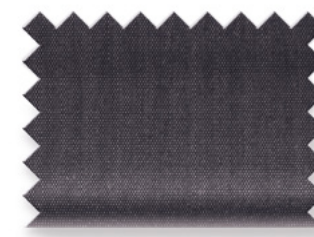


M 03006918 New Kent

M 03006968 New Kent

Art. **0304**Grössen / Sizes **37 - 48**

Chambray **Extra langer Arm / Extra long sleeve 69**

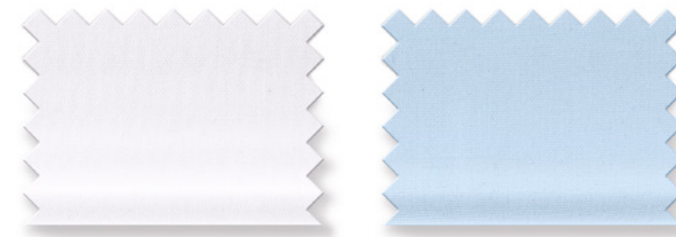


M 030469 67 New Kent

Art. **6350**Grössen / Sizes **37 - 48**

Extra langer Arm / Extra long sleeve 69

Ohne Brusttasche / Without chest pocket



M 635069 00 New Kent

M 635069 15 New Kent

Art. **0447** Grössen / Sizes **37 - 48**

Extra langer Arm / Extra long sleeve 69

Ohne Brusttasche / Without chest pocket



R 044769 00 Global Kent



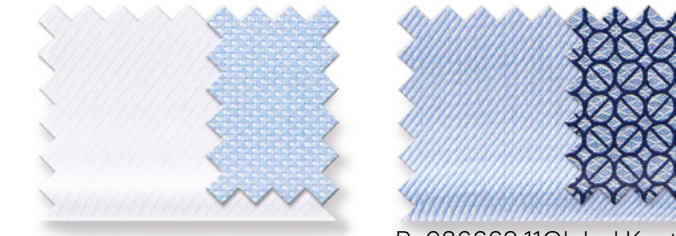
Kragen / Collar



Manschette / Cuff

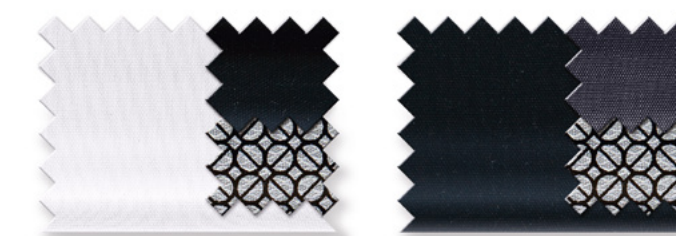
Art. **0366/0363** Grössen / Sizes **37 - 48**

Extra langer Arm / Extra long sleeve 69



R 036669 00 Global Kent

R 036669 11Global Kent



R 036369 00 Global Kent

R 036369 68 Global Kent



Kragen / Collar



Manschette / Cuff

NOS / 06

POLOS · T-SHIRTS

LUXOR COMFORT FIT

LUXOR MODERN FIT

LEVEL FIVE

NO. SIX

TENDENZ

LUCKY BLUSEN / BLOUSES

FEUERWEHR / FIRE BRIGADE PILOT

ACCESSORIES

INFO · CONTACT



SEARCH DOCUMENT



WRITE US AN EMAIL



100 % Baumwolle
100 % Cotton



Bügelfrei
Non-iron



Atmungsaktiv
Breathable



Knitterfrei
Wrinkle-free

Italienische Knopfleiste
Italian button panel

Verstellbare Manschetten mit Kombi-Funktion
Adjustable cuffs with combi function

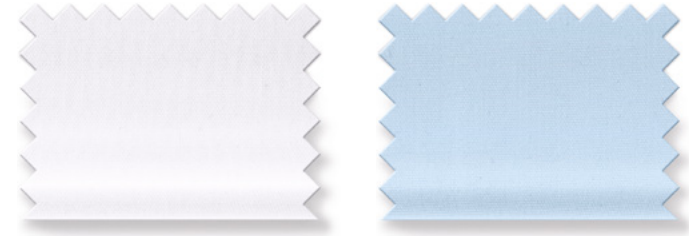
Hautsympathisch
Kind to the skin

Zeitgemäß, modisch taillierte Passform
Fashionably contemporary cut

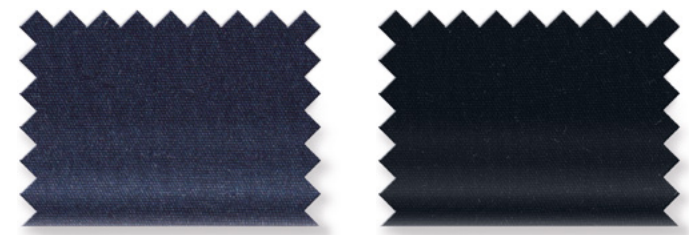
Oeko-Tex® Standard 100
Nr. 95.0.3008

Art. **0630** Grössen / Sizes **32 - 50**

Uni Halbarm / Short sleeve **1/2**



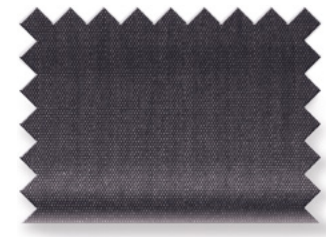
L 063012 00 Carpi L 063012 15 Carpi



L 063012 18 Carpi L 063012 68 Carpi

Art. **0634** Grössen / Sizes **32 - 50**

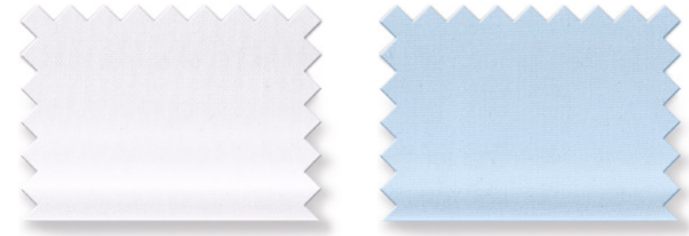
Chambray Halbarm / Short sleeve **1/2**



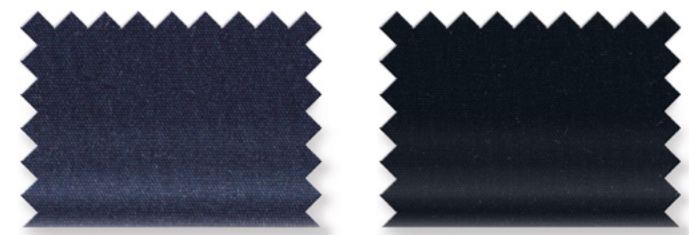
L 063412 67 Carpi

Art. **0630** Grössen / Sizes **32 - 50**

Uni Langarm / Long sleeve **1/1**



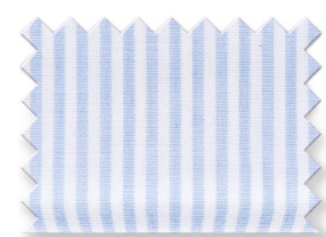
M 063061 00 Carpi M 063061 15 Carpi



M 063061 18 Carpi M 063061 68 Carpi

Art. **0631** Grössen / Sizes **32 - 50**

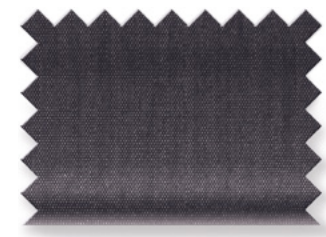
Zündholzstreifen / Fine stripe Langarm / Long sleeve **1/1**



M 063161 11 Carpi

Art. **0634** Grössen / Sizes **32 - 50**

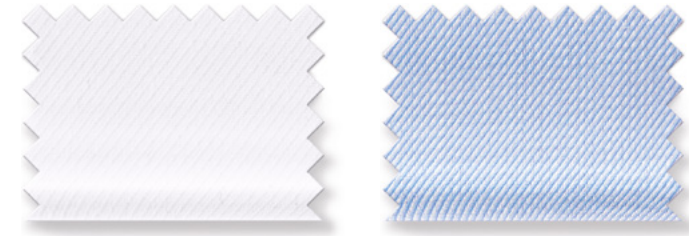
Chambray Langarm / Long sleeve **1/1**



M 063461 67 Carpi

Art. **0637** Grössen / Sizes **32 - 50**

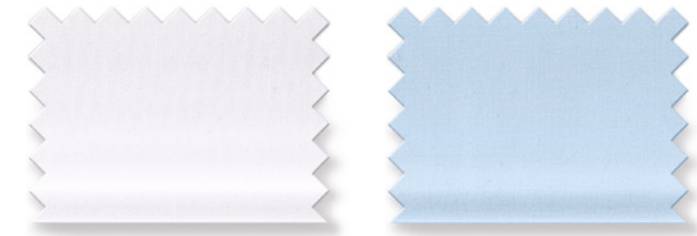
Twill Langarm / Long sleeve **1/1**



R 063761 00 Carpi R 063761 11 Carpi

Art. **0630** Grössen / Sizes **32 - 50**

Uni **Extra langer Arm / Extra long sleeve 66**



M 063066 00 Carpi M 063066 15 Carpi



M 063066 68 Carpi

NOS / 06

POLOS · T-SHIRTS

LUXOR COMFORT FIT

LUXOR MODERN FIT

LEVEL FIVE

NO. SIX

TENDENZ

LUCKY BLUSEN / BLOUSES

FEUERWEHR / FIRE BRIGADE PILOT

ACCESSORIES

INFO · CONTACT

OLYMP

LEVEL 5 FIVE

Body Fit

OLYMP



NOS / 06

POLOS · T-SHIRTS

LUXOR COMFORT FIT

LUXOR MODERN FIT

LEVEL FIVE

NO. SIX

TENDENZ

**LUCKY BLUSEN /
BLOUSES**

**FEUERWEHR /
FIRE BRIGADE PILOT**

ACCESSORIES

INFO · CONTACT



SEARCH
DOCUMENT



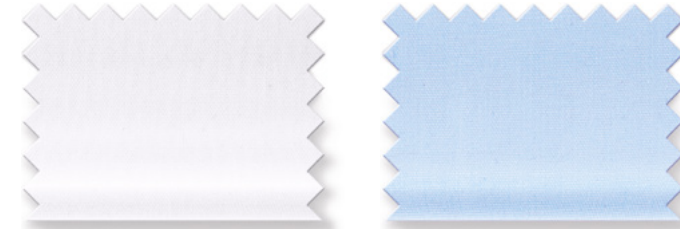
WRITE US
AN EMAIL



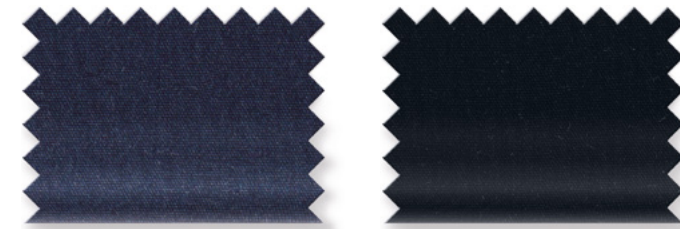
OLYMP

LEVEL FIVE · Body Fit · Hemden / Shirts

Art. **6090** Grössen / Sizes **36 - 4**
 Uni Halbarm / Short sleeve **1/2**

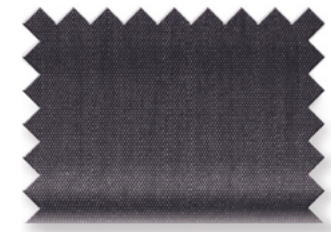


L 609012 00 New York Kent L 609012 15 New York Kent



L 609012 18 New York Kent L 609012 68 New York Kent

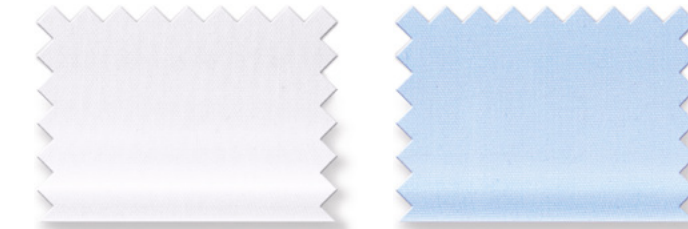
Art. **2080** Grössen / Sizes **36 - 46**
 Chambray Halbarm / Short sleeve **1/2**



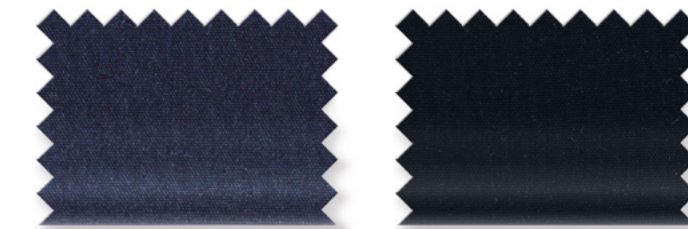
L 208012 67 New York Kent

Minimale Farbabweichung zu
 OLYMP LUXOR Modern Fit und
 Comfort Fit /
 Minimal colour deviation to
 OLYMP LUXOR Modern Fit and
 Comfort Fit

Art. **6090** Grössen / Sizes **36 - 46**
 Uni Langarm / Long sleeve **1/1**

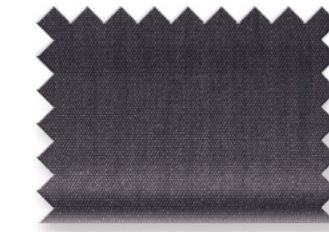


M 609064 00 New York Kent M 609064 15 New York Kent
 M 609364 00 Button-down



M 609064 18 New York Kent M 609064 68 New York Kent

Art. **2080** Grössen / Sizes **36 - 46**
 Chambray Langarm / Long sleeve **1/1**



M 208064 67 New York Kent

Minimale Farbabweichung zu
 OLYMP LUXOR Modern Fit und
 Comfort Fit /
 Minimal colour deviation to
 OLYMP LUXOR Modern Fit and
 Comfort Fit



Comfort Stretch



Bügelleicht Easy-iron

97% Baumwolle / 3% Elastolefin
 97% cotton / 3% elastolefin

Abnäher im Rücken
 Darted at the back

Schmale Knopfleiste
 Narrow button panel

Verstellbare Manschetten
 Adjustable cuffs

Formbeständig
 Shape-retaining

Körpernahe taillierte Passform
 Body-hugging, tapered fit

Oeko-Tex® Standard 100
 Nr. 95.0.3008

OLYMP



NOS / 06

POLOS · T-SHIRTS

LUXOR COMFORT FIT

LUXOR MODERN FIT

LEVEL FIVE

NO. SIX

TENDENZ

**LUCKY BLUSEN /
 BLOUSES**

**FEUERWEHR /
 FIRE BRIGADE PILOT**

ACCESSORIES

INFO · CONTACT



SEARCH DOCUMENT



WRITE US AN EMAIL

Art. **0492** Grössen / Sizes **36 - 46**
Langarm / Long sleeve **1/1**



R 049264 00 Global Kent



Kragen / Collar

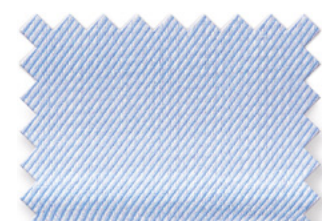


Manschette / Cuff

Art. **0762** Grössen / Sizes **36 - 46**
Twill Langarm / Long sleeve **1/1**

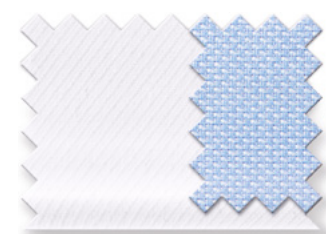


R 076264 00 New York Kent

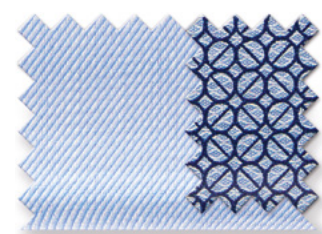


R 076264 11 New York Kent

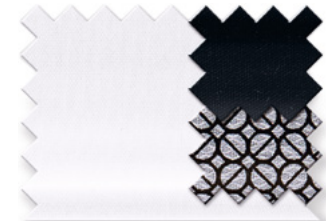
Art. **0468 / 0469** Grössen / Sizes **36 - 46**
Langarm / Long sleeve **1/1**



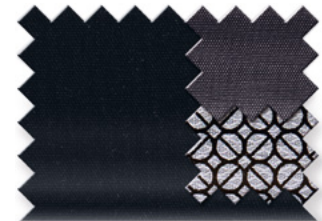
R 046864 00 Global Kent



R 046864 11 Global Kent



R 046964 00 Global Kent



R 046964 68 Global Kent



Kragen / Collar



Manschette / Cuff

Art. **6090** Grössen / Sizes **38 - 46**
Extra langer Arm / Extra long sleeve **69**



M 609069 00 New York Kent



M 609069 15 New York Kent

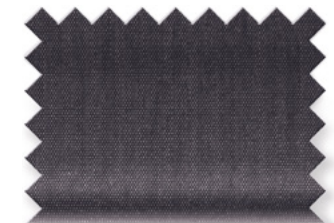


M 609069 18 New York Kent



M 609069 68 New York Kent

Art. **2080** Grössen / Sizes **38 - 46**
Chambray Extra langer Arm / Extra long sleeve **69**



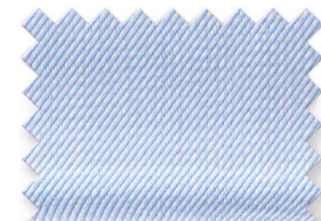
M 208069 67 New York Kent

Minimale Farbabweichung zu OLYMP LUXOR Modern Fit und Comfort Fit / Minimal colour deviation to OLYMP LUXOR Modern Fit and Comfort Fit

Art. **0762** Grössen / Sizes **38 - 46**
Twill Extra langer Arm / Extra long sleeve **69**



R 076269 00 New York Kent



R 076269 11 New York Kent

Art. **0492** Grössen / Sizes **38 - 46**
Extra langer Arm / Extra long



R 049269 00 Global Kent

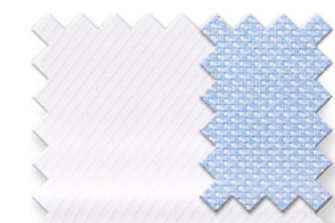


Kragen / Collar

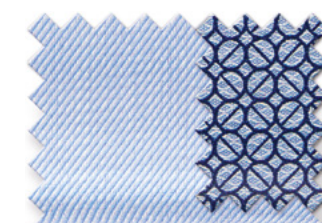


Manschette / Cuff

Art. **0468** Grössen / Sizes **38 - 46**
Extra langer Arm / Extra long sleeve **69**

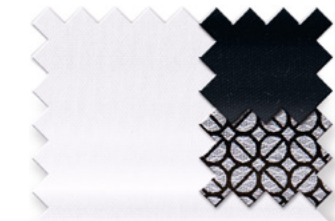


R 046869 00 Global Kent

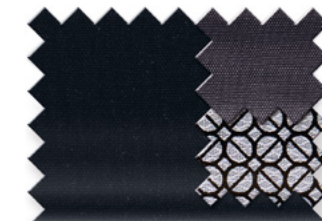


R 046869 11 Global Kent

Art. **0469** Grössen / Sizes **38 - 46**
Extra langer Arm / Extra long sleeve **69**



R 046969 00 Global Kent



R 046969 68 Global Kent



Kragen / Collar



Manschette / Cuff

NOS / 06

POLOS · T-SHIRTS

LUXOR COMFORT FIT

LUXOR MODERN FIT

LEVEL FIVE

NO. SIX

TENDENZ

LUCKY BLUSEN / BLOUSES

FEUERWEHR / FIRE BRIGADE PILOT

ACCESSORIES

INFO · CONTACT



OLYMP

LEVEL FIVE · Body Fit · Blusen / Blouses

Art. **0606** Grössen / Sizes **32 - 46**
Halbarm / Short sleeve **1/2**



L 060612 00 Arezzo

Art. **0606** Grössen / Sizes **32 - 46**
Langarm / Long sleeve **1/1**



M 060661 00 Arezzo



M 060661 15 Arezzo

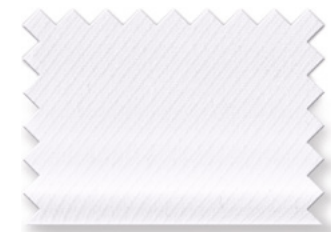


M 060661 18 Arezzo



M 060661 68 Arezzo

Art. **0609** Grössen / Sizes **32 - 46**
Twill Langarm / Long sleeve **1/1**



R 060961 00 Arezzo

Art. **0606** Grössen / Sizes **32 - 46**
Extra langer Arm / Extra long sleeve 66



M 06066600 Arezzo

↔ Comfort Stretch



Bügelleicht Easy-iron

97 % Baumwolle / 3 % Elastolefin
97 % cotton / 3 % elastolefin

Geschlossene Kragenform
Closed collar design.

Körperbetonte, stark taillierte Passform
Body-hugging, tapered fit

Oeko-Tex® Standard 100
Nr. 95.0.3008

OLYMP

← PREVIOUS PAGE CHAPTER → NEXT PAGE

NOS / 06

POLOS · T-SHIRTS

LUXOR COMFORT FIT

LUXOR MODERN FIT

LEVEL FIVE

NO. SIX

TENDENZ

LUCKY BLUSEN / BLOUSES

FEUERWEHR / FIRE BRIGADE PILOT

ACCESSORIES

INFO · CONTACT



SEARCH DOCUMENT



WRITE US AN EMAIL

OLYMP

NO. 6 SIX

Super Slim

OLYMP



NOS / 06

POLOS · T-SHIRTS

LUXOR COMFORT FIT

LUXOR MODERN FIT

LEVEL FIVE

NO. SIX

TENDENZ

**LUCKY BLUSEN /
BLOUSES**

**FEUERWEHR /
FIRE BRIGADE PILOT**

ACCESSORIES

INFO · CONTACT



SEARCH
DOCUMENT



WRITE US
AN EMAIL



OLYMP

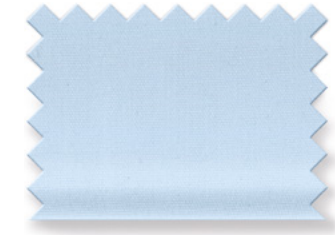
NO. SIX · Super Slim · Hemden / Shirts

Art. **0466** Grössen / Sizes **36 - 44**

Uni Langarm / Long sleeve **1/1**



M 046664 00 Urban Kent



M 046664 15 Urban Kent



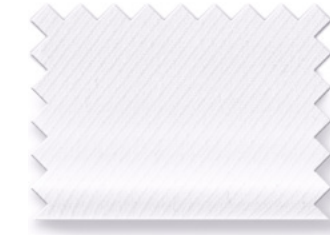
M 046664 18 Urban Kent



M 046664 68 Urban Kent

Art. **0777** Grössen / Sizes **36 - 44**

Twill Langarm / Long sleeve **1/1**



R 077764 00 Urban Kent

Art. **0499** Grössen / Sizes **36 - 44**

Langarm / Long sleeve **1/1**



R 049964 00 Urban Kent



Kragen / Collar



Manschette / Cuff

↔ Comfort Stretch

🧺 Bügelleicht Easy-iron

97% Baumwolle / 3% Elastolefin
97% cotton / 3% elastolefin

Abnäher im Rücken
Shape-retaining

Verstellbare Manschetten
Adjustable cuffs

Formbeständig
Shape-retaining

Stark taillierte, körpernahe Passform
Close-fitting, heavily tapered cut

Oeko-Tex® Standard 100
Nr. 95.0.3008

OLYMP



NOS / 06

POLOS · T-SHIRTS

LUXOR COMFORT FIT

LUXOR MODERN FIT

LEVEL FIVE

NO. SIX

TENDENZ

LUCKY BLUSEN / BLOUSES

FEUERWEHR / FIRE BRIGADE PILOT

ACCESSORIES

INFO · CONTACT

🔍
SEARCH DOCUMENT

✉️
WRITE US AN EMAIL

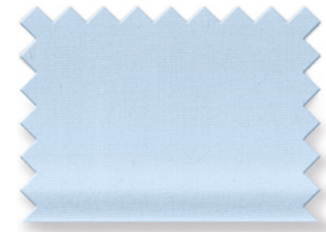
Art. **0466**

Größen / Sizes **36 - 44**

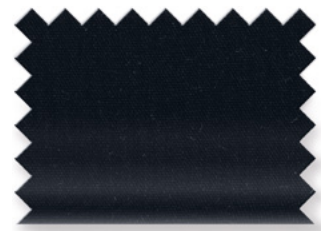
Uni **Extra langer Arm / Extra long sleeve 69**



M 046669 00 Urban Kent



M 046669 15 Urban Kent



M 046669 68 Urban Kent

Comfort
Stretch

Bügelleicht
Easy-iron

97 % Baumwolle / 3 % Elastolefin
97 % cotton / 3 % elastolefin

Abnäher im Rücken
Shape-retaining

Verstellbare Manschetten
Adjustable cuffs

Formbeständig
Shape-retaining

Stark taillierte, körpernahe Passform
Close-fitting, heavily tapered cut

Oeko-Tex® Standard 100
Nr. 95.0.3008



PREVIOUS PAGE
 CHAPTER
 NEXT PAGE

NOS / 06

POLOS · T-SHIRTS

LUXOR COMFORT FIT

LUXOR MODERN FIT

LEVEL FIVE

NO. SIX

TENDENZ

**LUCKY BLUSEN /
BLOUSES**

**FEUERWEHR /
FIRE BRIGADE PILOT**

ACCESSORIES

INFO · CONTACT

SEARCH
DOCUMENT

WRITE US
AN EMAIL

OLYMP

TENDENZ

Modern Fit

OLYMP



NOS / 06

POLOS · T-SHIRTS

LUXOR COMFORT FIT

LUXOR MODERN FIT

LEVEL FIVE

NO. SIX

TENDENZ

**LUCKY BLUSEN /
BLOUSES**

**FEUERWEHR /
FIRE BRIGADE PILOT**

ACCESSORIES

INFO · CONTACT



SEARCH
DOCUMENT



WRITE US
AN EMAIL



OLYMP

TENDENZ · Modern Fit · Hemden / Shirts

Art. **0513** Grössen / Sizes **36 - 50**

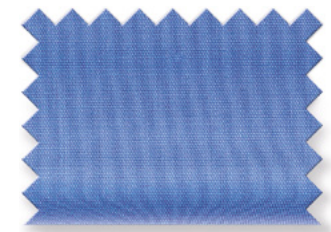
Uni Halbarm / Short sleeve **1/2**



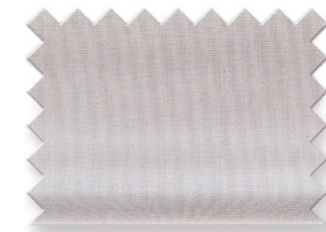
S 051312 00 New Kent



S 051312 11 New Kent



S 051312 15 New Kent



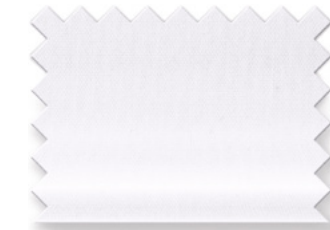
S 051312 63 New Kent



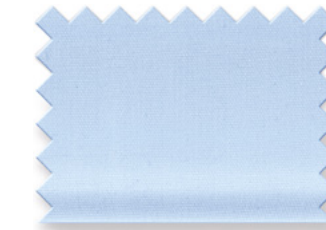
S 051312 68 New Kent

Art. **0513** Grössen / Sizes **36 - 50**

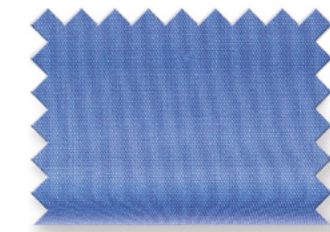
Uni Langarm / Long sleeve **1/1**



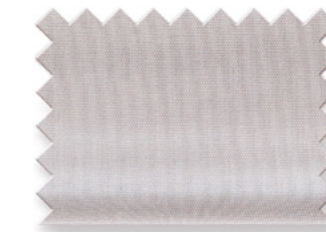
T 051364 00 New Kent



T 051364 11 New Kent



T 051364 15 New Kent



T 051364 63 New Kent



T 051364 68 New Kent

100 % Baumwolle
100 % Cotton

Bügelleicht
Easy-iron

Verstellbare Manschetten, abgerundete Form
Adjustable cuffs, rounded shape

Lose gelegt (ohne Legepappe, ohne Nadeln)
Loosely folded (without cardboard, without pins)

Für Mietwäsche geeignet
Suitable for hire linen

Soft und hautsympathisch
Soft and kind to the skin

Klassisch bequeme Passform
Classic comfortable fit

Oeko-Tex® Standard 100
Nr. 95.0.3008

OLYMP



NOS / 06

POLOS · T-SHIRTS

LUXOR COMFORT FIT

LUXOR MODERN FIT

LEVEL FIVE

NO. SIX

TENDENZ

**LUCKY BLUSEN /
BLOUSES**

**FEUERWEHR /
FIRE BRIGADE PILOT**

ACCESSORIES

INFO · CONTACT

SEARCH
DOCUMENT

WRITE US
AN EMAIL

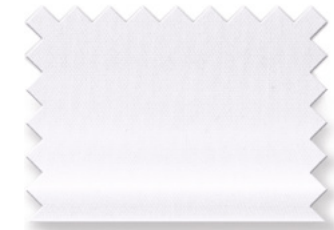


OLYMP

TENDENZ · Comfort Fit · **Blusen / Blouses**

Art. **0650** Grössen / Sizes **32 - 54**

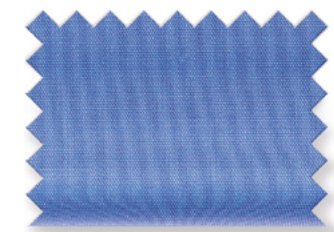
Uni Halbarm / Short sleeve **1/2**



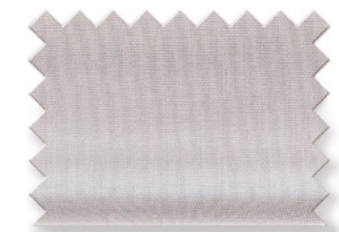
S 065012 00 Luisa



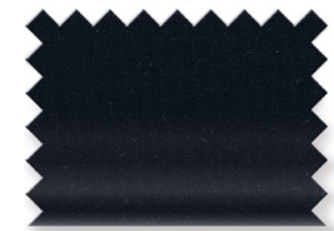
S 065012 11 Luisa



S 065012 15 Luisa



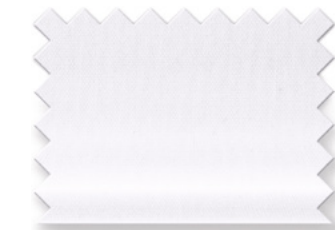
S 065012 63 Luisa



S 065012 68 Luisa

Art. **0650** Grössen / Sizes **32 - 54**

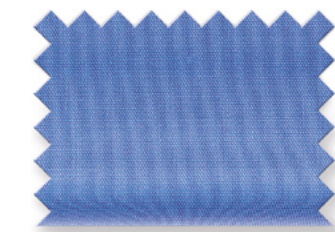
Uni Langarm / Long sleeve **1/1**



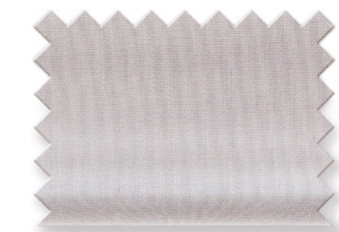
T 065061 00 Luisa



T 065061 11 Luisa



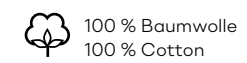
T 065061 15 Luisa



T 065061 63 Luisa



T 065061 68 Luisa



Geschlossene Kragenform
Closed collar design.

Legere, nicht einengende, bequeme, leicht taillierte Passform
Relaxed, comfortable, with freedom of movement and a slightly tailored fit

Oeko-Tex® Standard 100
Nr. 95.0.3008

OLYMP



NOS / 06

POLOS · T-SHIRTS

LUXOR COMFORT FIT

LUXOR MODERN FIT

LEVEL FIVE

NO. SIX

TENDENZ

**LUCKY BLUSEN /
BLOUSES**

**FEUERWEHR /
FIRE BRIGADE PILOT**

ACCESSORIES

INFO · CONTACT



OLYMP

Lucky Blusen / Blouses

OLYMP



NOS / 06

POLOS · T-SHIRTS

LUXOR COMFORT FIT

LUXOR MODERN FIT

LEVEL FIVE

NO. SIX

TENDENZ

**LUCKY BLUSEN /
BLOUSES**

**FEUERWEHR /
FIRE BRIGADE PILOT**

ACCESSORIES

INFO · CONTACT



SEARCH
DOCUMENT



WRITE US
AN EMAIL



OLYMP

Lucky Blusen / Blouses

Art. **0683**

Größen / Sizes **32 - 50**

Langarm / Long sleeve **1/1**



R 068361 00 Greta



Kragen / Collar

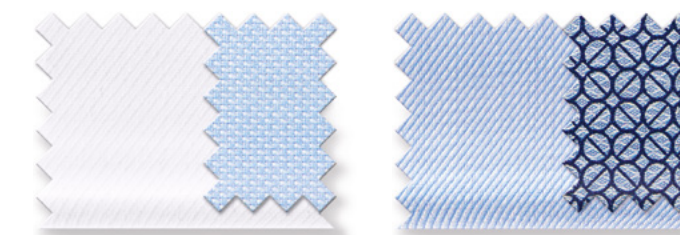


Manschette / Cuff

Art. **0681**

Größen / Sizes **32 - 50**

Langarm / Long sleeve **1/1**



R 068161 00 Greta

R 068161 11 Greta

OLYMP



NOS / 06

POLOS · T-SHIRTS

LUXOR COMFORT FIT

LUXOR MODERN FIT

LEVEL FIVE

NO. SIX

TENDENZ

**LUCKY BLUSEN /
BLOUSES**

**FEUERWEHR /
FIRE BRIGADE PILOT**

ACCESSORIES

INFO · CONTACT



SEARCH
DOCUMENT



WRITE US
AN EMAIL



100 % Baumwolle
100 % Cotton



Bügelfrei
Non-iron



Atmungsaktiv
Breathable

Knitterfrei
Wrinkle-free

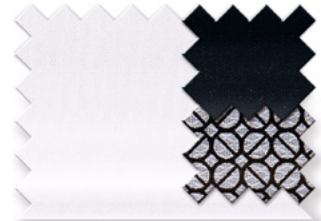
Geschlossene Kragenform
Closed collar design.

Oeko-Tex® Standard 100
Nr. 95.0.3008

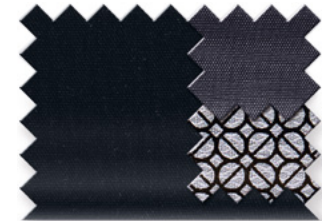
Art. **0682**

Größen / Sizes **32 - 50**

Langarm / Long sleeve **1/1**



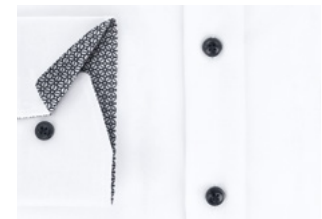
R 068261 00 Greta



R 068261 68 Greta



Kragen / Collar



Manschette / Cuff



NOS / 06

POLOS · T-SHIRTS

LUXOR COMFORT FIT

LUXOR MODERN FIT

LEVEL FIVE

NO. SIX

TENDENZ

**LUCKY BLUSEN /
BLOUSES**

**FEUERWEHR /
FIRE BRIGADE PILOT**

ACCESSORIES

INFO · CONTACT



SEARCH
DOCUMENT



WRITE US
AN EMAIL

OLYMP

Feuerwehr / Fire brigade · Pilot

OLYMP



NOS / 06

POLOS · T-SHIRTS

LUXOR COMFORT FIT

LUXOR MODERN FIT

LEVEL FIVE

NO. SIX

TENDENZ

**LUCKY BLUSEN /
BLOUSES**

**FEUERWEHR /
FIRE BRIGADE PILOT**

ACCESSORIES

INFO · CONTACT



SEARCH
DOCUMENT



WRITE US
AN EMAIL



Schultertunnel / Shoulder tunnel
Feuerwehr / Fire brigade



Schulterklappen / Shoulder epaulettes · Pilot

OLYMP

Feuerwehr / Fire brigade · Hemden / Shirts

Art. **0939** Grössen / Sizes **44 - 50 / 52 + 54**

Comfort Fit Halbarm / Short sleeve **1/2**



J 093912 00 Elbe



J 093912 11 Elbe



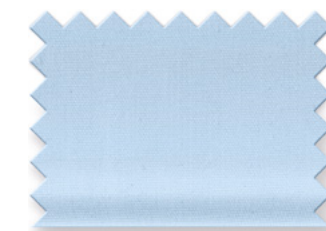
J 093912 18 Elbe

Art. **0932** Grössen / Sizes **36 - 48**

Modern Fit Halbarm / Short sleeve **1/2**



J 093212 00 Elbe



J 093212 11 Elbe



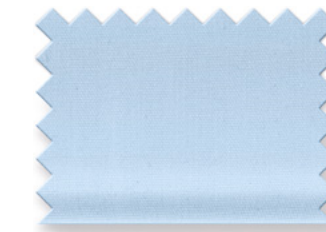
J 093212 18 Elbe

Art. **0938** Grössen / Sizes **44 - 50 / 52 + 54**

Comfort Fit Langarm / Long sleeve **1/1**



K 093864 00 Kent



K 093864 11 Kent



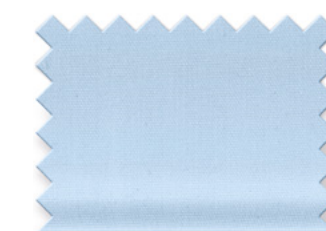
K 093864 18 Kent

Art. **0931** Grössen / Sizes **36 - 4**

Modern Fit Langarm / Long sleeve **1/1**



K 093164 00 Kent



K 093164 11 Kent



K 093164 18 Kent

84 % Baumwolle / 16 % Polyester
84 % cotton / 16 % polyester

Bügelleicht
Easy-iron

Schultertunnel · Feuerwehr / Schulterklappen · Pilot
Shoulder tunnel · Fire brigade / Shoulder epaulettes · Pilot

Sportmanschetten Weicher Kragen
Sports cuffs Soft collar

Zwei Brusttaschen mit Patten
Two chest pockets with flaps

Linke Tasche mit Schnelleinschubvorrichtung für Kugelschreiber
Left pocket with slot for pens

Bequeme Passform
Comfortable fit

Oeko-Tex® Standard 100
Nr. 95.0.3008

OLYMP

← PREVIOUS PAGE CHAPTER → NEXT PAGE

NOS / 06

POLOS · T-SHIRTS

LUXOR COMFORT FIT

LUXOR MODERN FIT

LEVEL FIVE

NO. SIX

TENDENZ

LUCKY BLUSEN / BLOUSES

FEUERWEHR / FIRE BRIGADE PILOT

ACCESSORIES

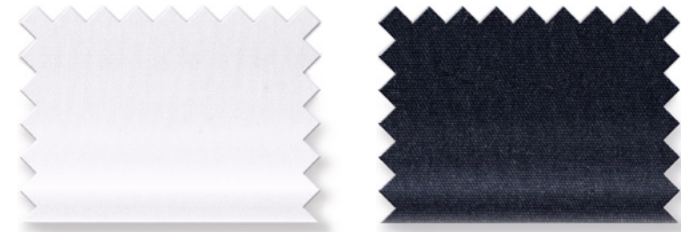
INFO · CONTACT

SEARCH DOCUMENT

WRITE US AN EMAIL

Art. **0931** Grössen / Sizes **36 - 48**

Modern Fit Extra kurzer Arm / Extra short sleeve **58**

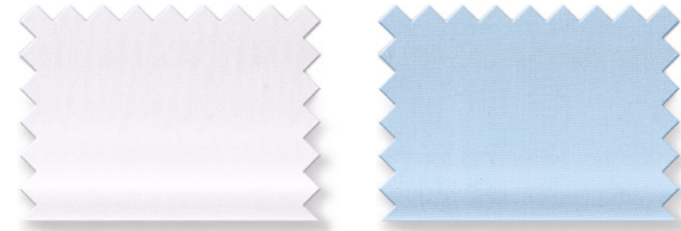


K 093158 00 Kent

K 093158 18 Kent

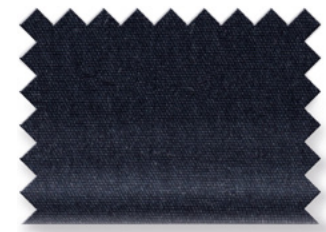
Art. **0931** Grössen / Sizes **38 - 48**

Modern Fit Extra langer Arm / Extra long sleeve **69**



K 093169 00 Kent

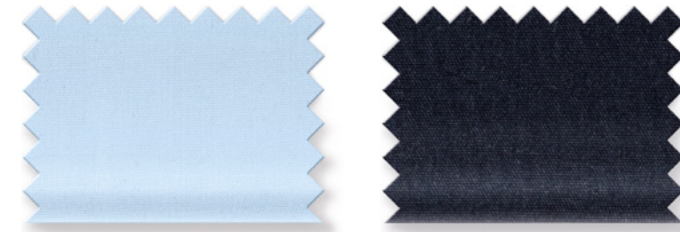
K 093169 11 Kent



K 093169 18 Kent

Art. **0937** Grössen / Sizes **32 - 52**

Tailliert Halbarm / Short sleeve **1/2**



J 093712 11 Elbe

J 093712 18 Elbe

Art. **0935** Grössen / Sizes **32 - 52**

Tailliert Halbarm / Short sleeve **1/2**

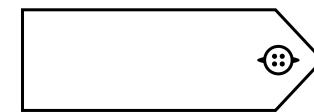
100 % Baumwolle / 100% Cotton



L 093512 00 Elbe

Art. **0799**

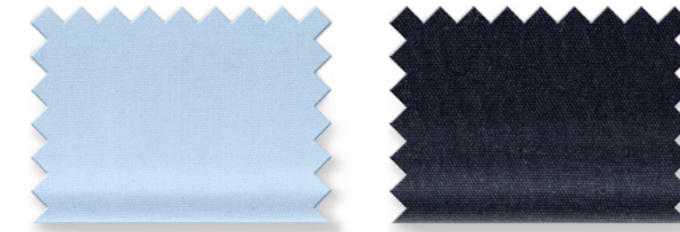
Paarweise Adapter für Schultertunnel, Gewebe siehe oben / Pair adapter for shoulder tunnel, fabric above



079901 00
079901 11
079901 18

Art. **0936** Grössen / Sizes **32 - 52**

Tailliert Langarm / Long sleeve **1/1**



K 093661 11 Kent

K 093661 18 Kent

Art. **0930** Grössen / Sizes **32 - 52**

Tailliert Langarm / Long sleeve **1/1**

100 % Baumwolle / 100% Cotton



M 093061 00 Kent



NOS / 06

POLOS · T-SHIRTS

LUXOR COMFORT FIT

LUXOR MODERN FIT

LEVEL FIVE

NO. SIX

TENDENZ

**LUCKY BLUSEN /
BLOUSES**

**FEUERWEHR /
FIRE BRIGADE PILOT**

ACCESSORIES

INFO · CONTACT





Schultertunnel / Shoulder tunnel
Feuerwehr / Fire brigade



Schulterklappen / Shoulder epaulettes · Pilot

OLYMP

Pilot · Hemden / Shirts

Art. **0830** Grössen / Sizes **44 - 50**

Comfort Fit - City 112 Halbarm / Short sleeve **1/2**



J 083012 00 Kent



J 0830-12-11 Kent
ab Gr. 37

Art. **0831** Grössen / Sizes **38 - 46 + 48**

Modern Fit Halbarm / Short sleeve **1/2**



J 083112 00 New Kent

Art. **0832** Grössen / Sizes **36 - 42**

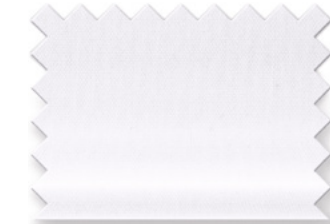
Body Fit Halbarm / Short sleeve **1/2**



J 083212 00 New Kent

Art. **0780** Grössen / Sizes **44 - 50**

Comfort Fit - City 112 Langarm / Long sleeve **1/1**



K 078064 00 Kent



K 0780-64-11 Kent
ab Gr. 37

Art. **0781** Grössen / Sizes **38 - 46 + 48**

Modern Fit Langarm / Long sleeve **1/1**



K 078164 00 New Kent

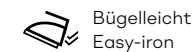
Art. **0782** Grössen / Sizes **36 - 42**

Body Fit Langarm / Long sleeve **1/1**



K 078264 00 New Kent

84 % Baumwolle / 16 % Polyester
84 % cotton / 16 % polyester



Bügelleicht
Easy-iron

Schultertunnel · Feuerwehr / Schulterklappen · Pilot
Shoulder tunnel · Fire brigade / Shoulder epaulettes · Pilot

Sportmanschetten
Sports cuffs

Weicher Kragen
Soft collar

Zwei Brusttaschen mit Patten
Two chest pockets with flaps

Linke Tasche mit Schnelleinschubvorrichtung für Kugelschreiber
Left pocket with slot for pens

Bequeme Passform
Comfortable fit

Oeko-Tex® Standard 100
Nr. 95.0.3008

OLYMP



NOS / 06

POLOS · T-SHIRTS

LUXOR COMFORT FIT

LUXOR MODERN FIT

LEVEL FIVE

NO. SIX

TENDENZ

**LUCKY BLUSEN /
BLOUSES**

**FEUERWEHR /
FIRE BRIGADE PILOT**

ACCESSORIES

INFO · CONTACT



SEARCH
DOCUMENT



WRITE US
AN EMAIL

Art. **0781** Grössen / Sizes **38 - 46 + 48**

Modern Fit **Extra langer Arm / Extra long sleeve** **69**



K 078169 00 New Kent

Art. **9289** Grössen / Sizes **32 - 48**

Halbarm / Short sleeve **1/2**



J 928912 00 Kent

Art. **9289** Grössen / Sizes **32 - 48**

Langarm / Long sleeve **1/1**



K 928961 00 Kent



NOS / 06

POLOS · T-SHIRTS

LUXOR COMFORT FIT

LUXOR MODERN FIT

LEVEL FIVE

NO. SIX

TENDENZ

**LUCKY BLUSEN /
BLOUSES**

**FEUERWEHR /
FIRE BRIGADE PILOT**

ACCESSORIES

INFO · CONTACT

OLYMP

Accessories

OLYMP



NOS / 06

POLOS · T-SHIRTS

LUXOR COMFORT FIT

LUXOR MODERN FIT

LEVEL FIVE

NO. SIX

TENDENZ

**LUCKY BLUSEN /
BLOUSES**

**FEUERWEHR /
FIRE BRIGADE PILOT**

ACCESSORIES

INFO · CONTACT



SEARCH
DOCUMENT



WRITE US
AN EMAIL

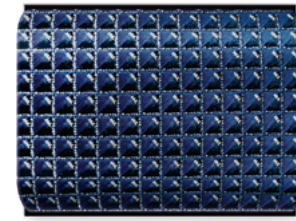


OLYMP

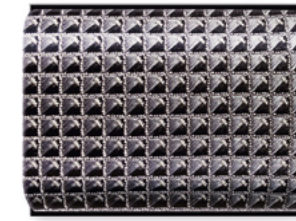
Accessories · Krawatten / Ties

Art. **1792** Breite / Width **6,5 cm**

Slim
Reine Seide / Pure silk



C 179200 18



C 179200 67

Art. **1790** Breite / Width **6,5 cm**

Slim
Reine Seide / Pure silk




D 179000 13


Art. **1789** Breite / Width **6,5 cm**

Slim
Reine Seide / Pure silk



C 178900 18

 Reine Seide
Pure Silk

 Fleckabweisend
Stain resistant

Schlanke Breite
Narrow width

 BIONIC
FINISH ECO

OLYMP

← PREVIOUS PAGE CHAPTER → NEXT PAGE

NOS / 06

POLOS · T-SHIRTS

LUXOR COMFORT FIT

LUXOR MODERN FIT

LEVEL FIVE

NO. SIX

TENDENZ

**LUCKY BLUSEN /
BLOUSES**

**FEUERWEHR /
FIRE BRIGADE PILOT**

ACCESSORIES

INFO · CONTACT

 SEARCH
DOCUMENT

 WRITE US
AN EMAIL

OLYMP

Info · Contact

OLYMP



NOS / 06

POLOS · T-SHIRTS

LUXOR COMFORT FIT

LUXOR MODERN FIT

LEVEL FIVE

NO. SIX

TENDENZ

**LUCKY BLUSEN /
BLOUSES**

**FEUERWEHR /
FIRE BRIGADE PILOT**

ACCESSORIES

INFO · CONTACT



SEARCH
DOCUMENT



WRITE US
AN EMAIL



COMFORT FIT

Die klassisch bequeme Passform zeichnet sich durch eine sehr komfortable Schnittführung aus.

This classic comfortable fit is characterised by a very comfortable cut.



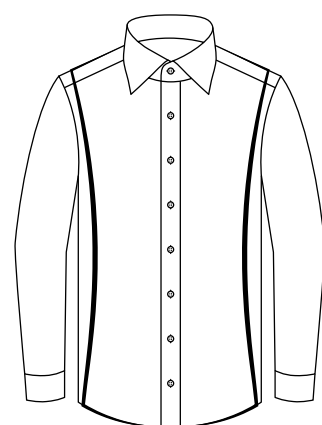
| Kragenweite | Oberweite | Taillenweite | Hemdlänge | Hemdlänge bei AL 69 |
|-------------|-----------|--------------|-----------|--------------------------|
| Neck | Chest | Waist | Length | Length Extra long sleeve |
| 36 | - | - | - | - |
| 37-38 | - | - | - | - |
| 39-40 | 122 | 118 | 80 | 84 |
| 41-42 | 128 | 124 | 82 | 86 |
| 43-44 | 134 | 132 | 82 | 86 |
| 45-46 | 140 | 140 | 84 | 88 |
| 47-48 | 148 | 148 | 84 | 88 |
| 49-50 | 156 | 156 | 86 | - |
| 52 | 164 | 164 | 86 | - |
| 54 | 172 | 172 | 88 | - |



MODERN FIT

Die modisch zeitgemäße Schnittform mit ihrer leichten Taillierung einer schmalen Silhouette.

This fashionably contemporary cut with its gentle tapering corresponds to a slim silhouette.



| Kragenweite | Oberweite | Taillenweite | Hemdlänge | Hemdlänge bei AL 69 |
|-------------|-----------|--------------|-----------|--------------------------|
| Neck | Chest | Waist | Length | Length Extra long sleeve |
| 36 | 108 | 98 | 80 | - |
| 37-38 | 114 | 102 | 80 | 84 |
| 39-40 | 120 | 106 | 80 | 84 |
| 41-42 | 126 | 112 | 82 | 86 |
| 43-44 | 132 | 122 | 82 | 86 |
| 45-46 | 138 | 130 | 84 | 88 |
| 47-48 | 144 | 138 | 84 | 88 |
| 49-50 | 152 | 146 | 86 | - |



MODERN FIT

Die modisch zeitgemäße Schnittform mit ihrer leichten Taillierung einer schmalen Silhouette.

This fashionably contemporary cut with its gentle tapering corresponds to a slim silhouette.



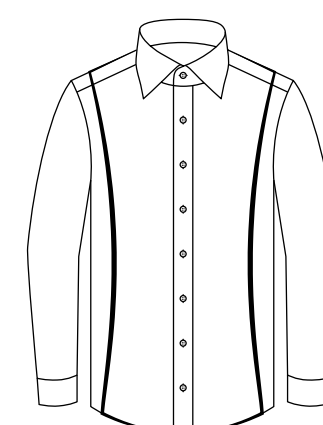
| Kragenweite | Oberweite | Taillenweite | Hemdlänge | Hemdlänge bei AL 69 |
|-------------|-----------|--------------|-----------|--------------------------|
| Neck | Chest | Waist | Length | Length Extra long sleeve |
| 36 | 108 | 98 | 80 | - |
| 37-38 | 114 | 102 | 80 | 84 |
| 39-40 | 120 | 106 | 80 | 84 |
| 41-42 | 126 | 112 | 82 | 86 |
| 43-44 | 132 | 122 | 82 | 86 |
| 45-46 | 138 | 130 | 84 | 88 |
| 47-48 | 144 | 138 | 84 | 88 |
| 49-50 | 152 | 146 | 86 | - |



BODY FIT

Die körpernahe taillierte Passform für schlanke und modebewusste Personen. Zwei Abnäher im Rücken garantieren einen figurbetonten Sitz.

The body-hugging, tapered fit for Slim and fashion-conscious people. Two tucks in the back guarantee a figure-hugging fit.



| Kragenweite | Oberweite | Taillenweite | Hemdlänge | Hemdlänge bei AL 69 |
|-------------|-----------|--------------|-----------|--------------------------|
| Neck | Chest | Waist | Length | Length Extra long sleeve |
| 36 | 98 | 86 | 76 | - |
| 37-38 | 104 | 92 | 78 | 81 |
| 39-40 | 110 | 98 | 80 | 83 |
| 41-42 | 116 | 104 | 80 | 83 |
| 43-44 | 124 | 112 | 83 | 87 |
| 45-46 | 132 | 120 | 85 | 89 |



SUPER SLIM

Der stark taillierte, körpernahe Schnitt für athletische Proportionen. Aus Comfort-Stretch-Gewebe für uneingeschränkt hohen Tragekomfort.

The close-fitting, heavily tapered cut for those with the proportions of an athlete. Made from comfort stretch fabric for excellent, unrestricted wearing comfort.



| Kragenweite | Oberweite | Taillenweite | Hemdlänge | Hemdlänge bei AL 69 |
|-------------|-----------|--------------|-----------|--------------------------|
| Neck | Chest | Waist | Length | Length Extra long sleeve |
| 36 | 96 | 80 | 76 | 79 |
| 37-38 | 102 | 86 | 78 | 81 |
| 39-40 | 106 | 92 | 80 | 83 |
| 41-42 | 112 | 98 | 80 | 83 |
| 43-44 | 120 | 106 | 83 | 87 |
| 45-46 | 128 | 114 | 85 | 89 |

NOS / 06

POLOS · T-SHIRTS

LUXOR COMFORT FIT

LUXOR MODERN FIT

LEVEL FIVE

NO. SIX

TENDENZ

LUCKY BLUSEN / BLOUSES

FEUERWEHR / FIRE BRIGADE PILOT

ACCESSORIES

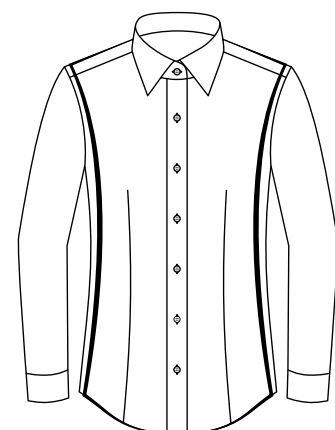
INFO · CONTACT





Die klassisch bequeme Passform zeichnet sich durch eine sehr komfortable Schnittführung aus.

This classic comfortable fit is characterised by a very comfortable cut.

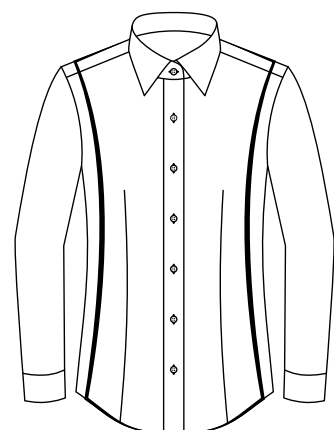


| Grösse | Oberweite | Taillenweite | Blusenlänge |
|--------|-----------|--------------|-------------|
| Size | Chest | Waist | Length |
| 32 | 88 | 78 | 65 |
| 34 | 92 | 82 | 65 |
| 36 | 96 | 86 | 65 |
| 38 | 100 | 90 | 65 |
| 40 | 104 | 94 | 66 |
| 42 | 108 | 100 | 66 |
| 44 | 114 | 106 | 67 |
| 46 | 120 | 112 | 67 |
| 48 | 128 | 120 | 69 |
| 50 | 136 | 128 | 69 |
| 52 | 144 | 136 | 75 |
| 54 | 152 | 144 | 75 |



Die modisch zeitgemäße Schnittform mit ihrer leichten Taillierung einer schmalen Silhouette.

This fashionably contemporary cut with its gentle tapering corresponds to a slim silhouette.



| Grösse | Oberweite | Taillenweite | Blusenlänge |
|--------|-----------|--------------|-------------|
| Size | Chest | Waist | Length |
| 32 | 87 | 74 | 65 |
| 34 | 91 | 78 | 65 |
| 36 | 95 | 82 | 65 |
| 38 | 99 | 86 | 65 |
| 40 | 103 | 90 | 65 |
| 42 | 107 | 95 | 66 |
| 44 | 111 | 100 | 66 |
| 46 | 116 | 106 | 67 |
| 48 | 122 | 112 | 67 |
| 50 | 129 | 120 | 69 |



Die klassisch bequeme Passform zeichnet sich durch eine sehr komfortable Schnittführung aus.

This classic comfortable fit is characterised by a very comfortable cut.

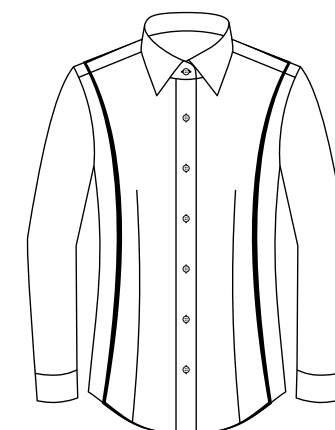


| Grösse | Oberweite | Taillenweite | Blusenlänge |
|--------|-----------|--------------|-------------|
| Size | Chest | Waist | Length |
| 32 | 88 | 78 | 65 |
| 34 | 92 | 82 | 65 |
| 36 | 96 | 86 | 65 |
| 38 | 100 | 90 | 65 |
| 40 | 104 | 94 | 66 |
| 42 | 108 | 100 | 66 |
| 44 | 114 | 106 | 67 |
| 46 | 120 | 112 | 67 |
| 48 | 128 | 120 | 69 |
| 50 | 136 | 128 | 69 |
| 52 | 144 | 136 | 75 |
| 54 | 152 | 144 | 75 |



Die körpernahe taillierte Passform für schlanke und modebewusste Personen. Zwei Abnäher im Rücken garantieren einen figurbetonten Sitz.

The body-hugging, tapered fit for Slim and fashion-conscious people. Two tucks in the back guarantee a figure-hugging fit.

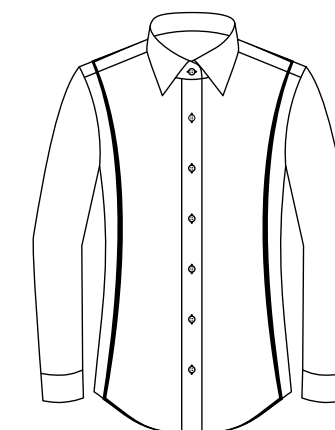


| Grösse | Oberweite | Taillenweite | Blusenlänge |
|--------|-----------|--------------|-------------|
| Size | Chest | Waist | Length |
| 32 | 86 | 71 | 64 |
| 34 | 90 | 75 | 64 |
| 36 | 94 | 79 | 64 |
| 38 | 98 | 83 | 64 |
| 40 | 102 | 87 | 64 |
| 42 | 106 | 91 | 65 |
| 44 | 110 | 97 | 65 |
| 46 | 116 | 104 | 66 |



Die lässig modische Schnittform mit leichter Taillierung.

The casually fashionable cut with a slight waistline



| Kragenweite | Oberweite | Taillenweite | Blusenlänge |
|-------------|-----------|--------------|-------------|
| Neck | Chest | Waist | Length |
| 32 | 90 | 80 | 66 |
| 34 | 94 | 84 | 66 |
| 36 | 98 | 88 | 66 |
| 38 | 102 | 92 | 66 |
| 40 | 106 | 96 | 66 |
| 42 | 110 | 102 | 67 |
| 44 | 115 | 108 | 67 |
| 46 | 121 | 114 | 68 |
| 48 | 129 | 122 | 68 |
| 50 | 136 | 130 | 70 |



NOS / 06

POLOS · T-SHIRTS

LUXOR COMFORT FIT

LUXOR MODERN FIT

LEVEL FIVE

NO. SIX

TENDENZ

LUCKY BLUSEN / BLOUSES

FEUERWEHR / FIRE BRIGADE PILOT

ACCESSORIES

INFO · CONTACT



SEARCH DOCUMENT

WRITE US AN EMAIL



Kent



New Kent



New York Kent



Global Kent



Urban Kent



Haifisch / Cutaway



Button-down



Elbe



Arezzo



Carpi



Greta



Karla



Kent



Susa

NOS / 06

POLOS · T-SHIRTS

LUXOR COMFORT FIT

LUXOR MODERN FIT

LEVEL FIVE

NO. SIX

TENDENZ

**LUCKY BLUSEN /
BLOUSES**

**FEUERWEHR /
FIRE BRIGADE PILOT**

ACCESSORIES

INFO · CONTACT



SEARCH DOCUMENT



WRITE US AN EMAIL



Verstellbare Manschette mit Kombi-Funktion / Adjustable cuff with combi function

Zwei Knöpfe zur Weitenregulierung, zwei Knopflöcher für Manschettenknöpfe / Two buttons to adjust width, two button-holes for cuff links



Verstellbare Manschette / Adjustable cuff

Zwei Knöpfe zur Weitenregulierung / Two buttons to adjust width

Damen / Ladies

Fertigmaße in cm / Finished sizes in cm

| Konfektionsgröße / Garment size | 32 | 34 | 36 | 38 | 40 | 42 | 44 | 46 | 48 | 50 | 52 | 54 |
|---|------|------|-----|------|------|------|------|------|-----|-----|-----|-----|
| Lucky Blusen / Blouses | | | | | | | | | | | | |
| Oberweite / Total chest measurement | 90 | 94 | 98 | 102 | 106 | 110 | 115 | 121 | 129 | 136 | | |
| Taillenweite / Total waist measurement | 80 | 84 | 88 | 92 | 96 | 102 | 108 | 114 | 122 | 130 | | |
| Blusenlänge / Blouse length | | | | | | | | | | | | |
| Normal / Regular sleeve | 66 | 66 | 66 | 66 | 66 | 67 | 67 | 68 | 68 | 70 | | |
| Comfort fit | | | | | | | | | | | | |
| Oberweite / Total chest measurement | 88 | 92 | 96 | 100 | 104 | 108 | 114 | 120 | 128 | 136 | 144 | 152 |
| Taillenweite / Total waist measurement | 78 | 82 | 86 | 90 | 94 | 100 | 106 | 112 | 120 | 128 | 136 | 144 |
| Blusenlänge / Blouse length | | | | | | | | | | | | |
| Normal / Regular sleeve | 65 | 65 | 65 | 65 | 66 | 66 | 67 | 67 | 69 | 69 | 75 | 75 |
| Modern fit | | | | | | | | | | | | |
| Oberweite / Total chest measurement | 87 | 91 | 95 | 99 | 103 | 107 | 111 | 116 | 122 | 129 | | |
| Taillenweite / Total waist measurement | 74 | 78 | 82 | 86 | 90 | 95 | 100 | 106 | 112 | 120 | | |
| Blusenlänge / Blouse length | | | | | | | | | | | | |
| Normal / Regular sleeve | 65 | 65 | 65 | 65 | 65 | 66 | 66 | 67 | 67 | 69 | | |
| Body fit | | | | | | | | | | | | |
| Oberweite / Total chest measurement | 86 | 90 | 94 | 98 | 102 | 106 | 110 | 116 | | | | |
| Taillenweite / Total waist measurement | 71 | 75 | 79 | 83 | 87 | 91 | 97 | 104 | | | | |
| Blusenlänge / Blouse length | | | | | | | | | | | | |
| Normal / Regular sleeve | 64 | 64 | 64 | 64 | 64 | 65 | 65 | 66 | | | | |
| Extra langer Arm / Extra long sleeve | 70 | 70 | 70 | 70 | 70 | 70 | 70 | 72 | | | | |
| Pilot - Feuerwehr / Pilot - Fire brigade | | | | | | | | | | | | |
| Oberweite / Total chest measurement | 92 | 96 | 100 | 104 | 108 | 112 | 118 | 124 | 130 | | | |
| Taillenweite / Total waist measurement | 82 | 86 | 90 | 94 | 98 | 102 | 108 | 114 | 120 | | | |
| Blusenlänge / Blouse length | | | | | | | | | | | | |
| Normal / Regular sleeve | 70 | 70 | 70 | 70 | 70 | 70 | 70 | 70 | 70 | | | |
| Größen / Sizes | | | | | | | | | | | | |
| | XS | S | M | L | XL | XXL | 3XL | 4XL | | | | |
| Polo | | | | | | | | | | | | |
| Länge gem. von Höchstem Schulterpunkt / Length acc. to Highest Shoulder Point | 63,8 | 65,4 | 67 | 69,7 | 72,4 | 75,1 | 77,8 | 80,5 | | | | |
| 1/2 Brustweite / 1/2 Chest width | 40 | 44 | 48 | 52 | 58 | 64 | 70 | 76 | | | | |
| 1/2 Taillenweite / 1/2 Waist width | 38 | 41 | 45 | 50 | 57 | 65 | 70 | 75 | | | | |



NOS / 06

POLOS · T-SHIRTS

LUXOR COMFORT FIT

LUXOR MODERN FIT

LEVEL FIVE

NO. SIX

TENDENZ

LUCKY BLUSEN / BLOUSES

FEUERWEHR / FIRE BRIGADE PILOT

ACCESSORIES

INFO · CONTACT



Herren / Men

Fertigmaße in cm / Finished sizes in cm

| Größen / Sizes | XS | S | M | L | XL | XXL | 3XL | 4XL | 5XL | 6XL | |
|---|------|---------|----------|-----------|----------|----------|----------|----------|-----------|------|-----|
| Kragenweite / Neck | 36 | 37 - 38 | 39 - 40 | 41 - 42 | 43 - 44 | 45 - 46 | 47 - 48 | 49 - 50 | 52 | 54 | |
| | inch | 14 | 14½ - 15 | 15½ - 15¾ | 16 - 16½ | 17 - 17½ | 17¾ - 18 | 18½ - 19 | 19½ - 19¾ | 20½ | 21½ |
| Comfort Fit | | | | | | | | | | | |
| Oberweite / Total chest measurement | | | 122 | 128 | 134 | 140 | 148 | 156 | 164 | 172 | |
| Taillenweite / Total waist measurement | | | 118 | 124 | 132 | 140 | 148 | 156 | 164 | 172 | |
| Rückenbreite / Back width | | | 49,5 | 51 | 52,5 | 54 | 55,5 | 57,5 | 59,5 | 61,5 | |
| Hemdlänge / Shirt length | | | | | | | | | | | |
| bei AL 12 kurz / Short sleeve | | | 80 | 82 | 82 | 84 | 84 | 86 | | | |
| bei AL 64 normal / Regular sleeve | | | 80 | 82 | 82 | 84 | 84 | 86 | 86 | 88 | |
| bei AL 58 / Extra short sleeve | | | 80 | 82 | 82 | 84 | 84 | | | | |
| bei AL 69 / Extra long sleeve | | | 84 | 86 | 86 | 88 | 88 | | | | |
| Modern Fit | | | | | | | | | | | |
| Oberweite / Total chest measurement | 108 | 114 | 120 | 126 | 132 | 138 | 144 | 152 | | | |
| Taillenweite / Total waist measurement | 98 | 102 | 106 | 112 | 122 | 130 | 138 | 146 | | | |
| Rückenbreite / Back width | 45,5 | 47 | 48,5 | 50 | 51,5 | 53 | 54,5 | 56,5 | | | |
| Hemdlänge / Shirt length | | | | | | | | | | | |
| bei AL 12 kurz / Short sleeve | 80 | 80 | 80 | 82 | 82 | 84 | 84 | 86 | | | |
| bei AL 64 normal / Regular sleeve | 80 | 80 | 80 | 82 | 82 | 84 | 84 | 86 | | | |
| bei AL 58 / Extra short sleeves | | 80 | 80 | 82 | 82 | 84 | 84 | | | | |
| bei AL 69 / Extra long sleeve | | 84 | 84 | 86 | 86 | 88 | 88 | | | | |
| bei AL 72 / Extra long sleeves | | 88 | 88 | 90 | 90 | 92 | 92 | | | | |
| Body Fit | | | | | | | | | | | |
| Oberweite / Total chest measurement | 98 | 104 | 110 | 116 | 124 | 132 | | | | | |
| Taillenweite / Total waist measurement | 86 | 92 | 98 | 104 | 112 | 120 | | | | | |
| Rückenbreite / Back width | 38 | 40 | 42 | 44 | 46 | 48 | | | | | |
| Hemdlänge / Shirt length | | | | | | | | | | | |
| bei AL 12 kurz / Short sleeve | 76 | 76 | 80 | 80 | 83 | 85 | | | | | |
| bei AL 64 normal / Regular sleeve | 76 | 78 | 80 | 80 | 83 | 85 | | | | | |
| bei AL 69 / Extra long sleeve | | 81 | 83 | 83 | 87 | 89 | | | | | |
| Super Slim | | | | | | | | | | | |
| Oberweite / Total chest measurement | 96 | 102 | 106 | 112 | 120 | 128 | | | | | |
| Taillenweite / Total waist measurement | 80 | 86 | 92 | 98 | 106 | 114 | | | | | |
| Rückenbreite / Back width | 40 | 41,5 | 43 | 45 | 47 | 49 | | | | | |
| Hemdlänge / Shirt length | | | | | | | | | | | |
| bei AL 64 normal / Regular sleeve | 76 | 78 | 80 | 80 | 83 | 85 | | | | | |
| bei AL 69 / Extra long sleeve | 79 | 81 | 83 | 83 | 87 | 89 | | | | | |
| Polo | | | | | | | | | | | |
| Länge gem. von höchstem Schulterpunkt / Length acc. to Highest Shoulder Point | 70 | 71 | 73 | 75 | 77 | 79 | 82 | 85 | 87 | 89 | |
| 1/2 Brustweite / 1/2 Chest width | 47 | 49 | 53 | 57 | 61 | 66 | 71 | 75 | 80 | 85 | |

Herren / Men

Fertigmaße in cm / Finished sizes in cm

| Größen / Sizes | XS | S | M | L | XL | XXL | 3XL | 4XL | 5XL | 6XL | |
|---|------|---------|----------|-----------|----------|----------|----------|----------|-----------|-----|-----|
| Kragenweite / Neck | 36 | 37 - 38 | 39 - 40 | 41 - 42 | 43 - 44 | 45 - 46 | 47 - 48 | 49 - 50 | 52 | 54 | |
| | inch | 14 | 14½ - 15 | 15½ - 15¾ | 16 - 16½ | 17 - 17½ | 17¾ - 18 | 18½ - 19 | 19½ - 19¾ | 20½ | 21½ |
| T Shirt | | | | | | | | | | | |
| Länge gem. von höchstem Schulterpunkt / Length acc. to Highest Shoulder Point | 67 | 67 | 69 | 72 | 74 | 77 | 80 | 83 | | | |
| 1/2 Brustweite / 1/2 Chest width | 38 | 41 | 44 | 48 | 52 | 56 | 62 | 68 | | | |
| Comfort Fit Feuerwehr | | | | | | | | | | | |
| Oberweite / Total chest measurement | | | | | 136 | 144 | 150 | 158 | 166 | 172 | |
| Taillenweite / Total waist measurement | | | | | 136 | 144 | 150 | 158 | 166 | 172 | |
| Rückenbreite / Back width | | | | | 51 | 53 | 55 | 57 | 59 | 61 | |
| Hemdlänge / Shirt length | | | | | | | | | | | |
| bei AL 12 kurz / Short sleeve | | | | | 85 | 85 | 85 | 85 | 90 | 90 | |
| bei AL 64 normal / Regular sleeve | | | | | 85 | 85 | 85 | 85 | 90 | 90 | |
| Modern Fit Pilot - Feuerwehr | | | | | | | | | | | |
| Oberweite / Total chest measurement | 108 | 114 | 120 | 126 | 132 | 138 | 144 | 152 | | | |
| Taillenweite / Total waist measurement | 98 | 102 | 106 | 112 | 122 | 130 | 136 | 144 | | | |
| Rückenbreite / Back width | 45 | 47 | 49 | 50,5 | 52 | 53,5 | 55 | 56,5 | | | |
| Hemdlänge / Shirt length | | | | | | | | | | | |
| bei AL 12 kurz / Short sleeve | 81 | 81 | 81 | 81 | 86 | 86 | 90 | 90 | | | |
| bei AL 64 normal / Regular sleeve | 81 | 81 | 81 | 81 | 86 | 86 | 90 | 90 | | | |
| bei AL 69 / Extra long sleeve | 85 | 85 | 85 | 85 | 90 | 95 | 95 | 95 | | | |
| bei AL 72 / Extra long sleeves | 85 | 85 | 85 | 85 | 90 | 95 | 95 | 95 | | | |
| Comfort Fit Pilot - City 112 | | | | | | | | | | | |
| Oberweite / Total chest measurement | | 112 | 118 | 126 | 132 | 142 | 150 | 158 | | | |
| Taillenweite / Total waist measurement | | 104 | 112 | 120 | 128 | 140 | 150 | 158 | | | |
| Rückenbreite / Back width | | 45 | 47 | 49 | 51 | 53 | 55 | 57 | | | |
| Hemdlänge / Shirt length | | | | | | | | | | | |
| bei AL 12 kurz / Short sleeve | | 80 | 80 | 80 | 85 | 85 | 85 | 85 | | | |
| bei AL 64 normal / Regular sleeve | | 80 | 80 | 80 | 85 | 85 | 85 | 85 | | | |
| Body Fit Pilot | | | | | | | | | | | |
| Oberweite / Total chest measurement | 98 | 104 | 110 | 116 | | | | | | | |
| Taillenweite / Total waist measurement | 86 | 92 | 98 | 104 | | | | | | | |
| Rückenbreite / Back width | 39,4 | 41 | 42,6 | 44,2 | | | | | | | |
| Hemdlänge / Shirt length | | | | | | | | | | | |
| bei AL 12 kurz / Short sleeve | 74 | 76 | 78 | 78 | | | | | | | |
| bei AL 64 normal / Regular sleeve | 74 | 76 | 78 | 78 | | | | | | | |

NOS / 06

POLOS · T-SHIRTS

LUXOR COMFORT FIT

LUXOR MODERN FIT

LEVEL FIVE

NO. SIX

TENDENZ

LUCKY BLUSEN / BLOUSES

FEUERWEHR / FIRE BRIGADE PILOT

ACCESSORIES

INFO · CONTACT



SEARCH DOCUMENT



WRITE US AN EMAIL

OLYMP



NOS / 06

POLOS · T-SHIRTS

LUXOR COMFORT FIT

LUXOR MODERN FIT

LEVEL FIVE

NO. SIX

TENDENZ

**LUCKY BLUSEN /
BLOUSES**

**FEUERWEHR /
FIRE BRIGADE PILOT**

ACCESSORIES

INFO · CONTACT

OLYMP

OLYMP BEZNER KG · HÖPFIGHEIMER STRASSE 19 · 74321 BIETIGHEIM-BISSINGEN · GERMANY
TELEFON +49 7142 592-0 · FAX +49 7142 592-19 · CF@OLYMP.COM · OLYMP.COM

